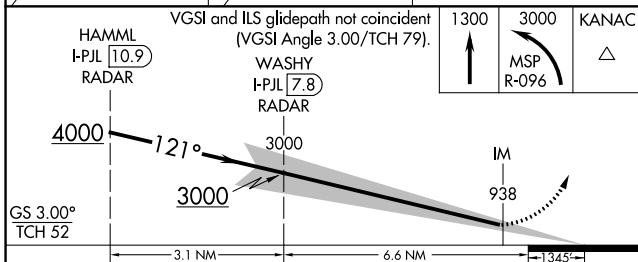
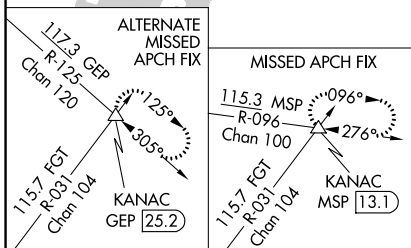
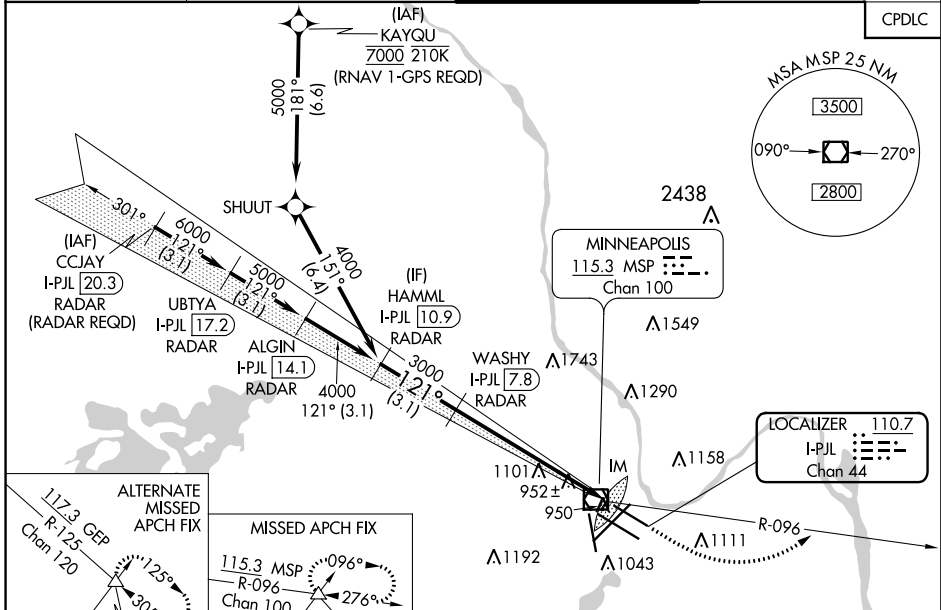


LOC/DME I-PJL 110.7 Chan 44	APP CRS 121°	Rwy Idg TDZE Apt Elev	7620 841 842
---	------------------------	-----------------------------	---

ILS RWY 12L (CAT II & III)

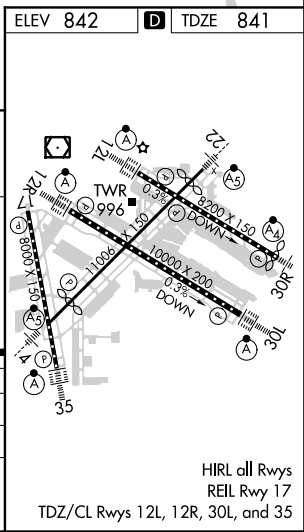
MINNEAPOLIS-ST PAUL INTL/WOLD-CHAMBERLAIN (MSP)

<p>⚠ Simultaneous approach authorized with Rwy 12R. CAT II: RVR 1000 authorized with specific OPSPEC, MSPEC, or LOA approval and use of autoland or HUD to touchdown. DME or RADAR required.</p>	<p>ALSIF-2</p>	<p>MISSED APPROACH: Climb to 1300, then climbing left turn to 3000 on MSP VOR/DME R-096 to KANAC INT/MSP 13.1 DME and hold.</p>	
		<p>D-ATIS ARR 135.35 239.275 DEP 120.8</p>	<p>MINNEAPOLIS APP CON 118.725 335.65 (Rwy 35) 119.3 335.65 (12L-30R, 4-22, 17) 126.95 335.65 (12R-30L)</p>



CATEGORY	A	B	C	D
S-ILS 12L	CAT II RA 91/12 100 DA 941			
S-ILS 12L	CAT III RVR 07			

CATEGORY II & III ILS - SPECIAL AIRCREW & AIRCRAFT CERTIFICATION REQUIRED



NC-1, 18 JUL 2019 to 15 AUG 2019

NC-1, 18 JUL 2019 to 15 AUG 2019

HIRL all Rwys
REIL Rwy 17
TDZ/CL Rwys 12L, 12R, 30L, and 35