

(STYCK7.STYCK) 19115

AL-197 (FAA)

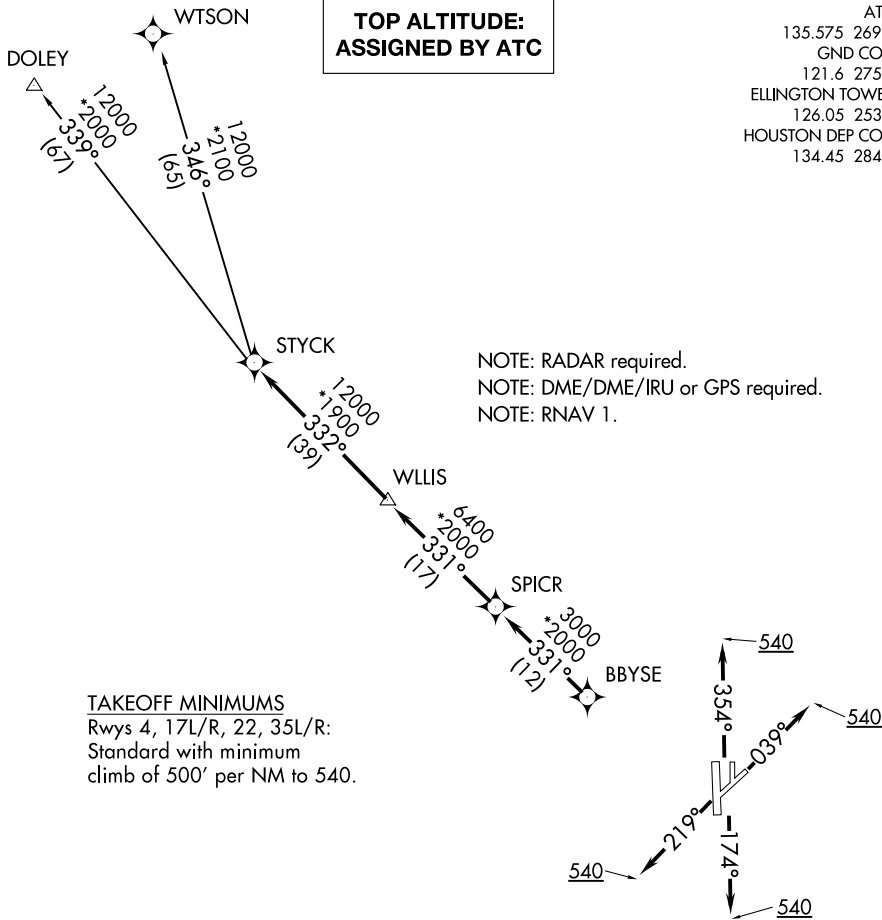
# STYCK SEVEN DEPARTURE (RNAV)

ELLINGTON (EFD)

HOUSTON, TEXAS

**TOP ALTITUDE:  
ASSIGNED BY ATC**

ATIS  
 135.575 269.9  
 GND CON  
 121.6 275.8  
 ELLINGTON TOWER  
 126.05 253.5  
 HOUSTON DEP CON  
 134.45 284.0



NOTE: RADAR required.  
 NOTE: DME/DME/IRU or GPS required.  
 NOTE: RNAV 1.

NOTE: Chart not to scale.



## DEPARTURE ROUTE DESCRIPTION

- TAKEOFF RWY 4: Climb heading 039° to 540 for RADAR vectors to BBYSE, thence. . .
- TAKEOFF RWYS 17L/R: Climb heading 174° to 540 for RADAR vectors to BBYSE, thence. . .
- TAKEOFF RWY 22: Climb heading 219° to 540 for RADAR vectors to BBYSE, thence. . .
- TAKEOFF RWYS 35L/R: Climb heading 354° to 540 for RADAR vectors to BBYSE, thence. . .

. . . on track 331° to SPICR, then on track 331° to WLLIS, then on track 332° to STYCK, then on (transition). Maintain ATC assigned altitude. Expect filed altitude 10 minutes after departure.

- DOLEY TRANSITION (STYCK7.DOLEY)
- WTSON TRANSITION (STYCK7.WTSON)

# STYCK SEVEN DEPARTURE (RNAV)

(STYCK7.STYCK) 25APR19

HOUSTON, TEXAS  
 ELLINGTON (EFD)

SC-5, 18 JUL 2019 to 15 AUG 2019

SC-5, 18 JUL 2019 to 15 AUG 2019