

MMALT FIVE DEPARTURE (RNAV)

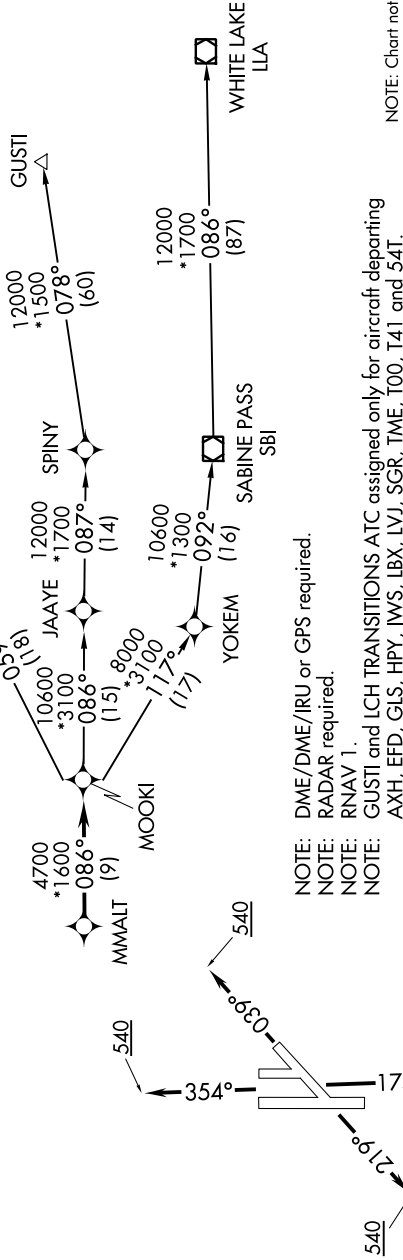
SC-5, 18 JUL 2019 to 15 AUG 2019

**TOP ALTITUDE:
ASSIGNED BY ATC**

TAKEOFF MINIMUMS

Rwy 4, 17L/R, 22, 35L/R: Standard with minimum climb of 500' per NM to 540.

ATIS 135.575 269.9
GND CON 121.6 275.8
ELLINGTON TOWER 126.05 253.5
HOUSTON DEP CON 134.45 284.0



NOTE: DME/DME/IRU or GPS required.

NOTE: RADAR required.

NOTE: RNAV 1.

NOTE: GUSTI and LCH TRANSITIONS ATC assigned only for aircraft departing AXH, EFD, GLS, HPY, IWS, LBX, LVJ, SGR, TME, T00, T41 and 54T.

NOTE: Chart not to scale.

DEPARTURE ROUTE DESCRIPTION

- TAKEOFF RWY 4: Climb on heading 039° to 540 for RADAR vectors to MMALT, thence. . . .
- TAKEOFF RWYS 17L/R: Climb on heading 174° to 540 for RADAR vectors to MMALT, thence. . . .
- TAKEOFF RWY 22: Climb on heading 219° to 540 for RADAR vectors to MMALT, thence. . . .
- TAKEOFF RWYS 35L/R: Climb on heading 354° to 540 for RADAR vectors to MMALT, thence. . . .

. . . on track 086° to MOOKI, then on (transition). Maintain ATC assigned altitude. Expect filed altitude 10 minutes after departure.

- GUSTI TRANSITION (MMALT5.GUSTI)
- LAKE CHARLES TRANSITION (MMALT5.LCH)
- WHITE LAKE TRANSITION (MMALT5.LLA)

MMALT FIVE DEPARTURE (RNAV)

(MMALT5.MMALT) 25APR19

SC-5, 18 JUL 2019 to 15 AUG 2019