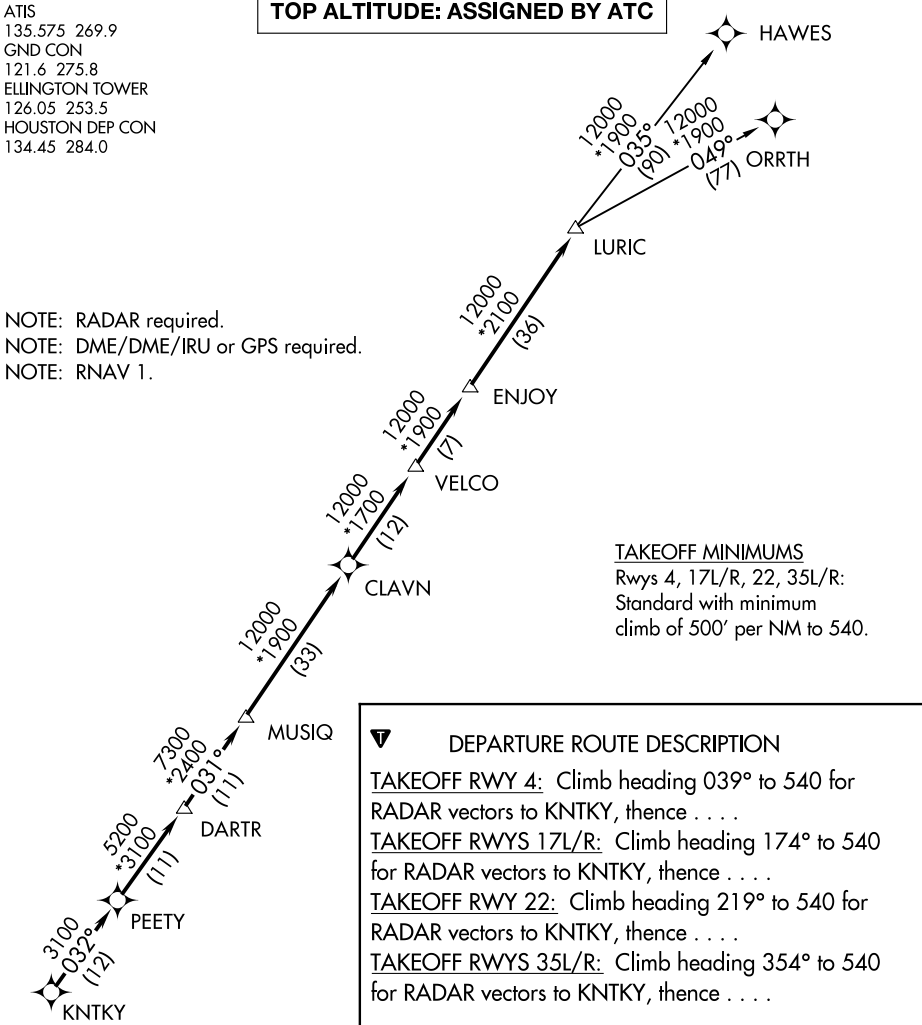


LURIC SEVEN DEPARTURE (RNAV)

ATIS  
135.575 269.9  
GND CON  
121.6 275.8  
ELLINGTON TOWER  
126.05 253.5  
HOUSTON DEP CON  
134.45 284.0

**TOP ALTITUDE: ASSIGNED BY ATC**

NOTE: RADAR required.  
NOTE: DME/DME/IRU or GPS required.  
NOTE: RNAV 1.



TAKEOFF MINIMUMS  
Rwys 4, 17L/R, 22, 35L/R:  
Standard with minimum  
climb of 500' per NM to 540.

**DEPARTURE ROUTE DESCRIPTION**

TAKEOFF RWY 4: Climb heading 039° to 540 for RADAR vectors to KNTKY, then . . .

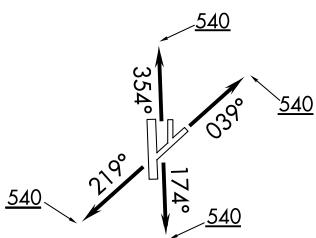
TAKEOFF RWYS 17L/R: Climb heading 174° to 540 for RADAR vectors to KNTKY, then . . .

TAKEOFF RWY 22: Climb heading 219° to 540 for RADAR vectors to KNTKY, then . . .

TAKEOFF RWYS 35L/R: Climb heading 354° to 540 for RADAR vectors to KNTKY, then . . .

. . . on track 032° to PEETY, then on track 032° to DARTR, then on track 031° to MUSIQ, then on track 031° to CLAVN, then on track 031° to VELCO, then on track 031° to ENJOY, then on track 031° to LURIC, then on (transition). Maintain ATC assigned altitude. Expect filed altitude 10 minutes after departure.

HAWES TRANSITION (LURIC7.HAWES)  
ORRTH TRANSITION (LURIC7.ORRTH)



NOTE: Chart not to scale.

SC-5, 18 JUL 2019 to 15 AUG 2019

SC-5, 18 JUL 2019 to 15 AUG 2019

LURIC SEVEN DEPARTURE (RNAV)