

ILS or LOC RWY 17R

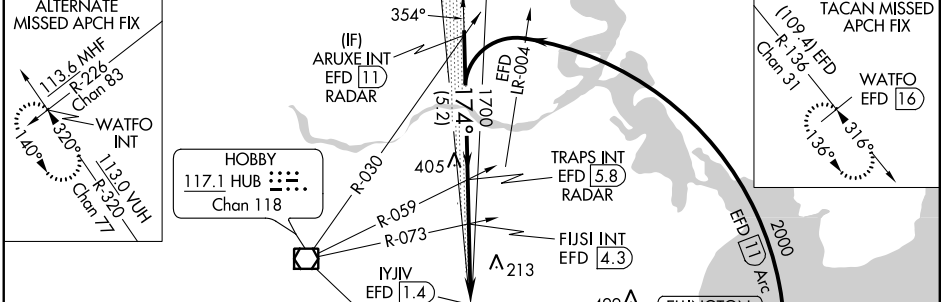
ELLINGTON (EFD)

LOC I-HPV 110.3	APP CRS 174°	Rwy Idg 9001
		TDZE 32
		Apt Elev 33

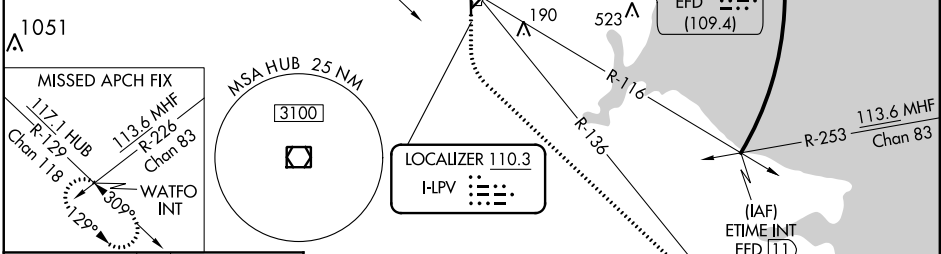
⚠ Circling NA west of Rwy 17R-35L. Inop table does not apply to S-ILS 17R. For inop MALSF, increase S-LOC 17R Cat A visibility to RVR 6000, Cat B to 1½ miles and Cat E to 3 miles. FIJISI Fix Minimums: For inop MALSF, increase S-LOC 17R Cats A and B visibility to RVR 5500 and Cats C, D and E to RVR 6000.

MALSF
MISSED APPROACH: Climb to 700 then climbing left turn to 3100 on HUB VOR/DME R-129 to WATFO INT and hold (TACAN aircraft climb to 700 then climbing left turn to 3100 on HOLD TACAN R-136 to WATFO INT/ EFD 16 DME and hold southeast, left turn, 316° inbound).

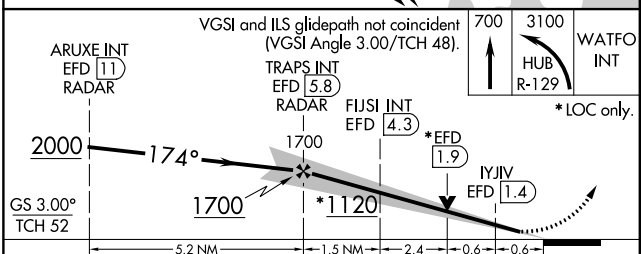
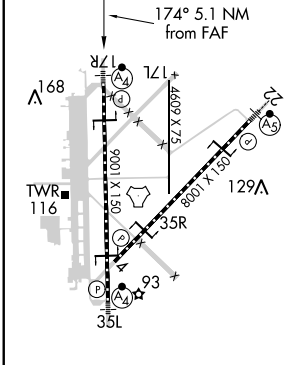
ATIS 135.575 269.9	HOUSTON APP CON 134.45 284.0	ELLINGTON TOWER 126.05 253.5	GND CON 121.6 275.8
------------------------------	--	--	-------------------------------



RADAR REQUIRED



ELEV 33	D	TDZE 32
---------	----------	---------



CATEGORY	A	B	C	D	E
S-ILS 17R	232/40		200 (200-¾)		
S-LOC 17R	1120/50 1088 (1100-1)	1120/60 1088 (1100-1¼)	1120-2½ 1088 (1100-2½)		
CIRCLING	1120-1¼ 1087 (1100-1¼)	1120-1½ 1087 (1100-1½)	1120-3 1087 (1100-3)		
FIJISI FIX MINIMUMS (DUAL VOR RECEIVERS OR DME REQUIRED)					
S-LOC 17R	440/40 408 (500-¾)		440/50 408 (500-1)		
CIRCLING	500-1 467 (500-1)	500-1½ 467 (500-1½)		600-2 567 (600-2)	660-2¼ 627 (700-2¼)

FAF to MAP 5.1 NM					
Knots	60	90	120	150	180
Min:Sec	5:06	3:24	2:33	2:02	1:42

SC-5, 18 JUL 2019 to 15 AUG 2019

SC-5, 18 JUL 2019 to 15 AUG 2019