

HI-TACAN RWY 35L

TACAN EFD Chan 31	APCH CRS 002°	Rwy Idg THRE 28 Arpt Elev 33	JAL197 [USAF]	HOUSTON/ELLINGTON (KEFD)
-----------------------------	-------------------------	--	---------------	--------------------------

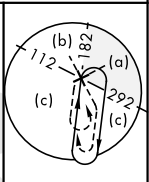
* When ALS inop, increase CAT CDE vis to 1 1/8 miles.
 ** Circling not authorized W of Rwy 17R-35L.

 MALSF

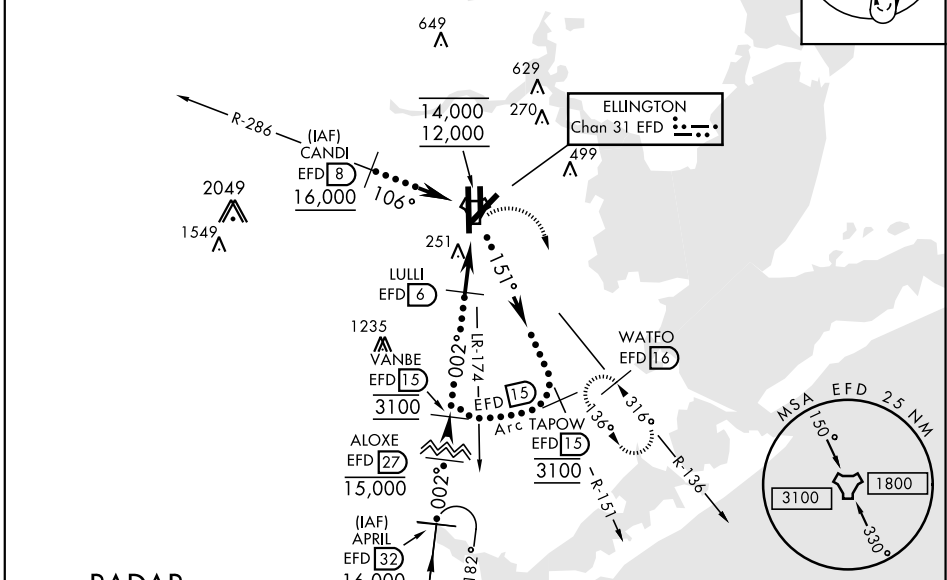
 MISSED APPROACH: Climbing right turn to 3100 on EFD TACAN R-136 to WATFO/ EFD 16 DME and hold.

ATIS 135.575 269.9	HOUSTON APP CON 134.45 284.0	ELLINGTON TOWER 126.05 253.5	GND CON 121.6 275.8
------------------------------	--	--	-------------------------------

EFD TACAN	N29°36.36' W95°09.58'
CANDI	N29°39.24' W95°18.17'
APRIL	N29°04.53' W95°14.05'
WATFO	N29°23.90' W94°58.07'

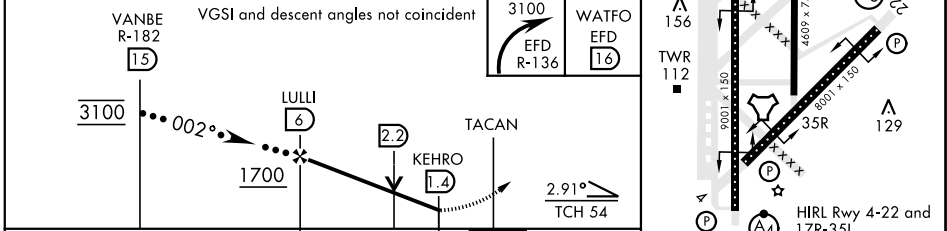


Enroute penetration to 15 DME Arc available



RADAR REQUIRED

EMERG SAFE ALT 100 NM 16,000



CATEGORY	C	D	E
S-35L *	520/60	492	(500-1 1/4)
CIRCLING **	520-1 1/2 487 (500-1 1/2)	600-2 567 (600-2)	660-2 1/4 627 (700-2 1/4)

HI-TACAN RWY 35L

SC-5, 18 JUL 2019 to 15 AUG 2019

SC-5, 18 JUL 2019 to 15 AUG 2019