

# HI-ILS or LOC/DME RWY 22

LOC I-FNF <b>110.1</b>	APCH CRS <b>219°</b>	Rwy Idg THRE Arprt Elev <b>8001</b> <b>30</b> <b>33</b>	JAL-197 [USAF]	HOUSTON/ELLINGTON (KEFD)
---------------------------	-------------------------	--	----------------	--------------------------

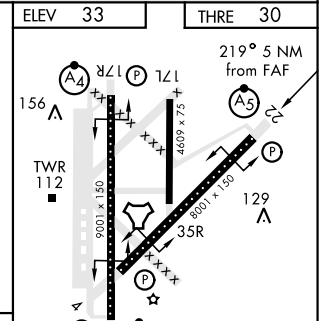
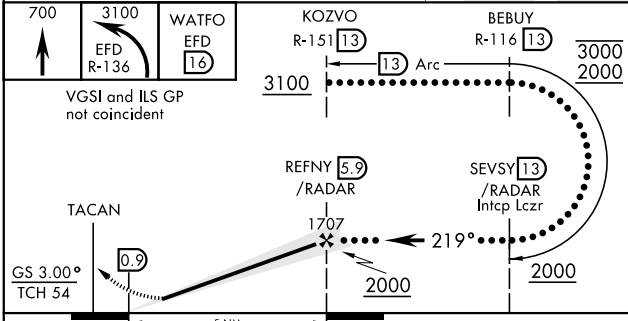
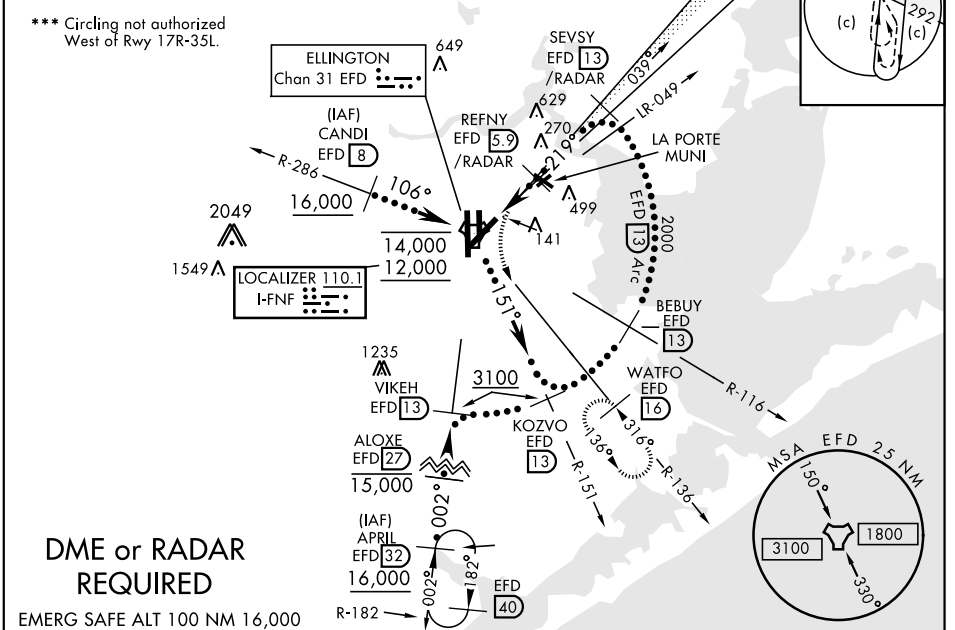
▼ \*When ALS inop, increase CAT CDE RVR to 40, and vis to ¼ mile.  
 \*\*When ALS inop, increase CAT CDE RVR to 60, and vis to 1½ mile.

MALS R (A5)

MISSED APPROACH: Climb to 700 then climbing left turn to 3100 on EFD R-136 to WATFO/EFD16 DME and hold.

ATIS <b>135.575 269.9</b>	HOUSTON APP CON <b>134.45 284.0</b>	ELLINGTON TOWER <b>126.05 253.5</b>	GND CON <b>121.6 275.8</b>
------------------------------	--	--	-------------------------------

EFD TACAN	N29°36.36' W95°09.58'
CANDI	N29°39.24' W95°18.17'
APRIL	N29°04.53' W95°14.05'
WATFO	N29°23.90' W94°58.07'



CATEGORY	C	D	E
S-ILS 22*	230/24	200	(200-½)
S-LOC 22**	460/40	430	(500-¾)
CIRCLING***	500-1½ 467 (500-1½)	600-2 567 (600-2)	660-2¼ 627 (700-2¼)

# HI-ILS or LOC/DME RWY 22

SC-5, 18 JUL 2019 to 15 AUG 2019

SC-5, 18 JUL 2019 to 15 AUG 2019