

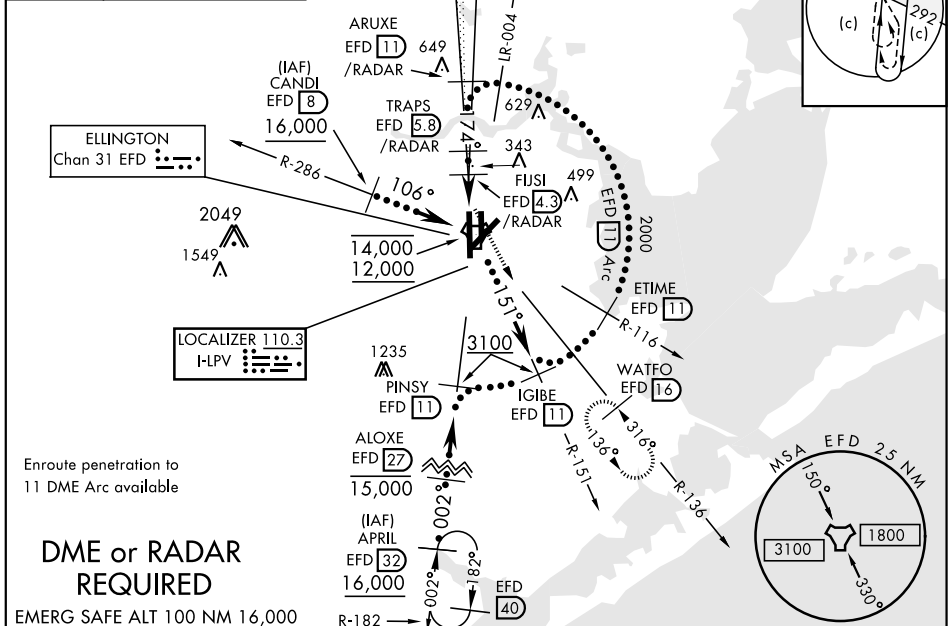
HOUSTON, TEXAS

# HI-ILS or LOC/DME RWY 17R

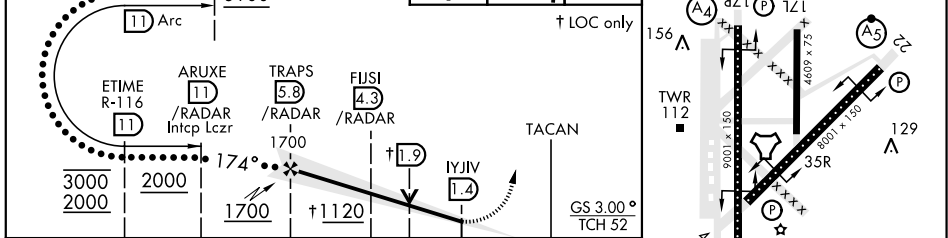
LOC I-LPV <b>110.3</b>	APCH CRS <b>174°</b>	Rwy Idg THRE Arprt Elev <b>9001</b> <b>31</b> <b>33</b>	JAL-197 [USAF]	HOUSTON/ELLINGTON (KEFD)
▼ * When ALS inop, increase CAT CDE RVR to 60 and vis to 1 1/4 miles. ** Circling not authorized W of Rwy 17R-35L.			MALSF A4	MISSED APPROACH: Climb to 700 then climbing left turn to 3100 on EFD R-136 to WATFO/EFD 16 DME and hold.

ATIS <b>135.575 269.9</b>	HOUSTON APP CON <b>134.45 284.0</b>	ELLINGTON TOWER <b>126.05 253.5</b>	GND CON <b>121.6 275.8</b>
------------------------------	--	--	-------------------------------

EFD TACAN N29°36.36' W95°09.58'		
CANDI N29°39.24' W95°18.17'		
APRIL N29°04.53' W95°14.05'		
WATFO N29°23.90' W94°58.07'		



IGIBE R-151 11	VGSI and ILS GP not coincident	700	3100	WATFO EFD 16	ELEV 33	THRE 31
† LOC only				174° 5.1 NM from FAF		



CATEGORY	C	D	E	
S-ILS 17R	231/40	200	(200-3/4)	
S-LOC 17R*	440/50	409	(500-1)	
CIRCLING**	500-1 1/2 467 (500-1 1/2)	600-2 567 (600-2)	660-2 1/4 627 (700-2 1/4)	

HIRL Rwy 4-22 and 17R-35L  
TDZL/CL Rwy 17R, 22 and 35L

HOUSTON, TEXAS 29° 37' N-95° 10' W HOUSTON/ELLINGTON (KEFD)

# HI-ILS or LOC/DME RWY 17R

SC-5, 18 JUL 2019 to 15 AUG 2019

SC-5, 18 JUL 2019 to 15 AUG 2019

Amtd 4A 06FEB14