

EL DORADO NINE DEPARTURE

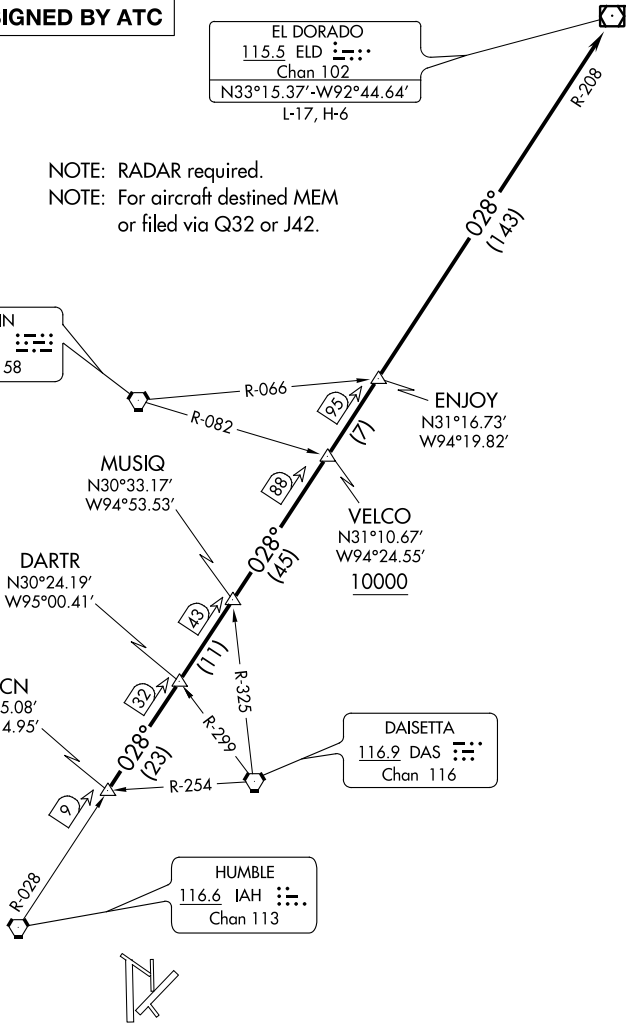
ATIS
 135.575 269.9
 GND CON
 121.6 275.8
 ELLINGTON TOWER
 126.05 253.5
 HOUSTON DEP CON
 134.45 284.0

**TOP ALTITUDE:
 ASSIGNED BY ATC**

EL DORADO
 115.5 ELD
 Chan 102
 N33°15.37'-W92°44.64'
 L-17, H-6

NOTE: RADAR required.
 NOTE: For aircraft destined MEM
 or filed via Q32 or J42.

LUFKIN
 112.1 LFK
 Chan 58



TAKEOFF MINIMUMS

Rwys 4, 17L/R, 35L/R: Standard.

Rwy 22: 200-1¼ or standard with minimum
 climb of 214' per NM to 300 or alternatively with
 standard takeoff minimums and a normal 200' per
 NM climb gradient, takeoff must occur no later than
 1400' prior to DER.

NOTE: Chart not to scale.

(NARRATIVE ON FOLLOWING PAGE)

SC-5, 18 JUL 2019 to 15 AUG 2019

SC-5, 18 JUL 2019 to 15 AUG 2019