

# CRIED NINE DEPARTURE

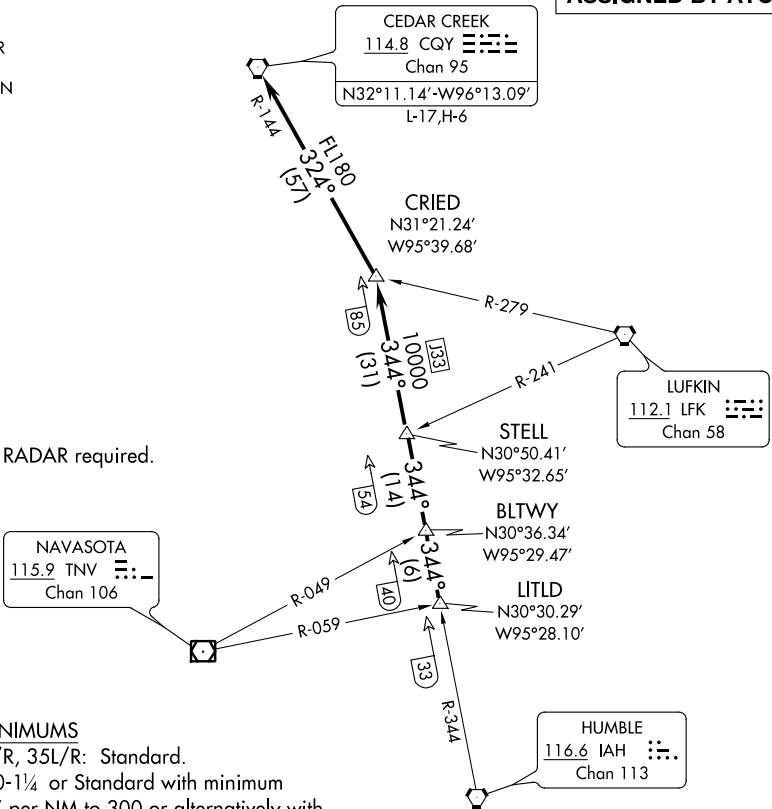
AL-197 (FAA)

ELLINGTON (EFD)  
HOUSTON, TEXAS

ATIS  
135.575 269.9  
GND CON  
121.6 275.8  
ELLINGTON TOWER  
126.05 253.5  
HOUSTON DEP CON  
134.45 284.0

**TOP ALTITUDE:  
ASSIGNED BY ATC**

NOTE: RADAR required.



### TAKEOFF MINIMUMS

Rwys 4, 17L/R, 35L/R: Standard.  
Rwy 22: 200-1/4 or Standard with minimum climb of 214' per NM to 300 or alternatively with standard takeoff minimums and a normal 200' per NM climb gradient, takeoff must occur no later than 1400' prior to DER.

NAVASOTA  
115.9 TNV  
Chan 106

CEDAR CREEK  
114.8 CQY  
Chan 95  
N32°11.14'-W96°13.09'  
L-17,H-6

CRIED  
N31°21.24'  
W95°39.68'

LUFKIN  
112.1 LFK  
Chan 58

STELL  
N30°50.41'  
W95°32.65'

BLTWY  
N30°36.34'  
W95°29.47'

LITLD  
N30°30.29'  
W95°28.10'

HUMBLE  
116.6 IAH  
Chan 113

### DEPARTURE ROUTE DESCRIPTION

TAKEOFF ALL RUNWAYS: Climb on assigned heading for RADAR vectors to LITLD INT. Maintain ATC assigned altitude. Expect filed altitude 10 minutes after departure, thence . . . .

. . . . on IAH R-344 to STELL INT, then on IAH R-344 to CRIED INT then left turn on CQY R-144 to CQY VORTAC.

# CRIED NINE DEPARTURE

SC-5, 18 JUL 2019 to 15 AUG 2019

SC-5, 18 JUL 2019 to 15 AUG 2019