
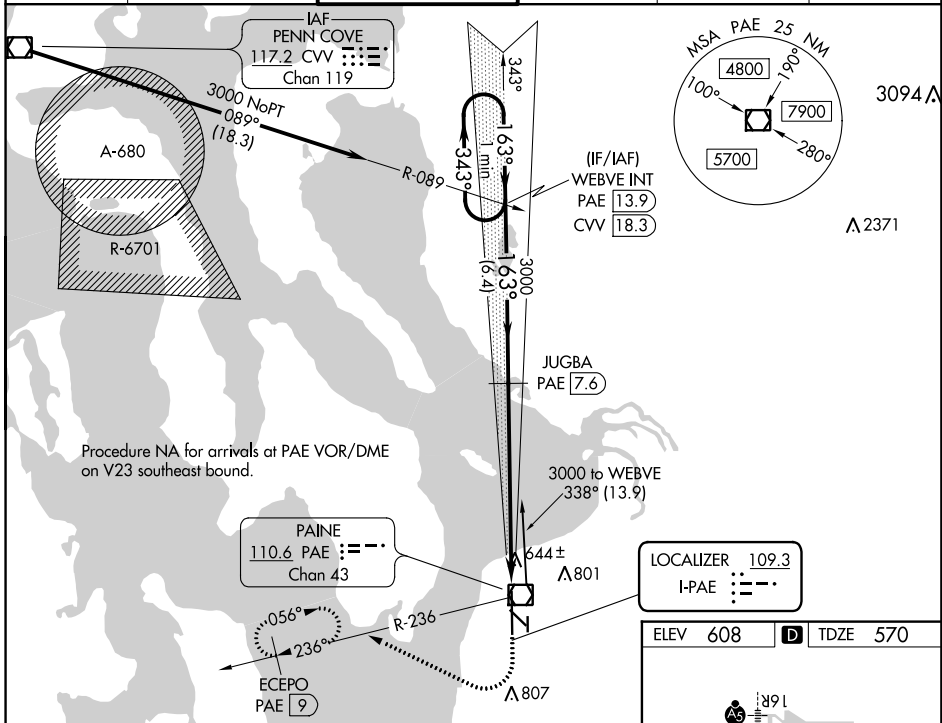


LOC I-PAE 109.3	APP CRS 163°	Rwy Idg TDZE Apt Elev	9010 570 608
---------------------------	------------------------	-----------------------------	---

ILS Z RWY 16R (SA CAT II)
SNOHOMISH COUNTY (PAINE FIELD) (PAE)

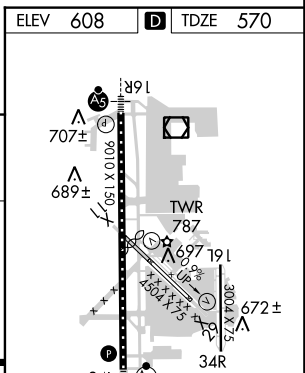
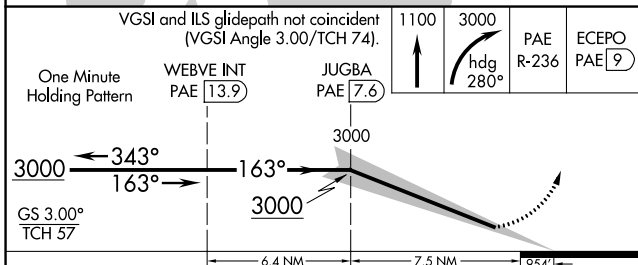
<p>▼ DME required. Reduced Lighting: Requires specific OPSPEC, MSPEC, or LOA approval and use of autoland or HUD to touchdown. ▲ DME from PAE VOR/DME. Simultaneous reception of I-PAE and PAE DME required. Procedure NA when control tower closed.</p>	<p>MALSR </p>	<p>MISSED APPROACH: Climb to 1100 then climbing right turn to 3000 on heading 280° and PAE VOR/DME R-236 to ECEPO/PAE 9 DME and hold, continue climb-in-hold to 3000.</p>
---	---	---

ATIS 128.65	SEATTLE APP CON 128.5 306.9	PAINE TOWER ★ 132.95 (CTAF) 0 256.7	GND CON 121.8 339.8	CLNC DEL 126.75	UNICOM 122.95
-----------------------	---------------------------------------	---	-------------------------------	---------------------------	-------------------------



NW-1, 18 JUL 2019 to 15 AUG 2019

NW-1, 18 JUL 2019 to 15 AUG 2019



CATEGORY	A	B	C	D
S-ILS 16R	RA 116/12 100 DA 670			

SA CATEGORY II ILS-SPECIAL AIRCREW & AIRCRAFT CERTIFICATION REQUIRED

TDZ/CL Rwy 16R
HIRL Rwy 16R-34L
REIL Rws 16L and 34R
MRL Rws 11-29 and 16L-34R