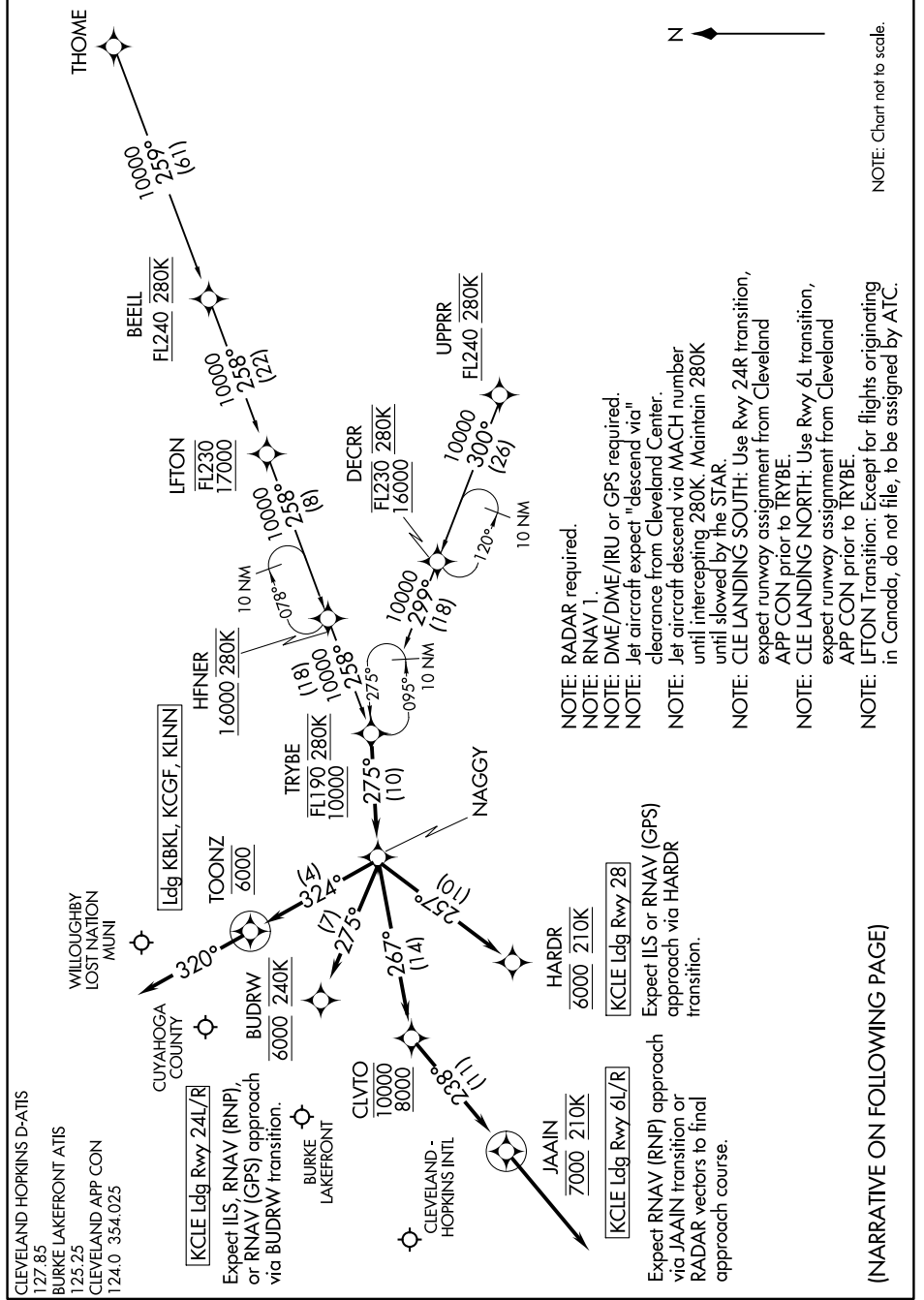


EC-2, 18 JUL 2019 to 15 AUG 2019



CLEVELAND HOPKINS D-ATIS  
127.85  
BURKE LAKEFRONT ATIS  
125.25  
CLEVELAND APP CON  
124.0 354.025

Ldg KBKL, KCGF, KLINN

KCLE Ldg Rwy 24L/R  
Expect ILS, RNAV (RNP),  
or RNAV (GPS) approach  
via BUDRW transition.

KCLE Ldg Rwy 6L/R  
Expect RNAV (RNP) approach  
via JAAIN transition or  
RADAR vectors to final  
approach course.

KCLE Ldg Rwy 28  
Expect ILS or RNAV (GPS)  
approach via HARDR  
transition.

- NOTE: RADAR required.
- NOTE: RNAV 1.
- NOTE: DME/DME/IRU or GPS required.
- NOTE: Jet aircraft expect "descend via" clearance from Cleveland Center.
- NOTE: Jet aircraft descend via MACH number until intercepting 280K. Maintain 280K until slowed by the STAR.
- NOTE: CLE LANDING SOUTH: Use Rwy 24R transition, expect runway assignment from Cleveland APP CON prior to TRYBE.
- NOTE: CLE LANDING NORTH: Use Rwy 6L transition, expect runway assignment from Cleveland APP CON prior to TRYBE.
- NOTE: LFTON Transition: Except for flights originating in Canada, do not file, to be assigned by ATC.

(NARRATIVE ON FOLLOWING PAGE)

EC-2, 18 JUL 2019 to 15 AUG 2019