

WAAS CH <b>49134</b> <b>W03A</b>	APP CRS <b>035°</b>	Rwy Idg <b>3398</b> TDZE <b>941</b> Apt Elev <b>943</b>
--	------------------------	---

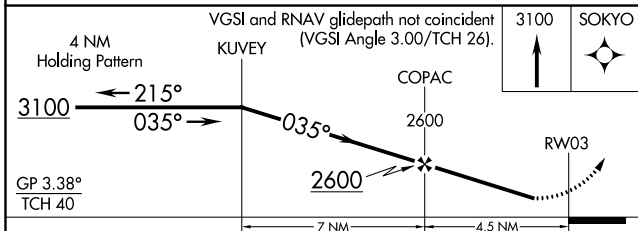
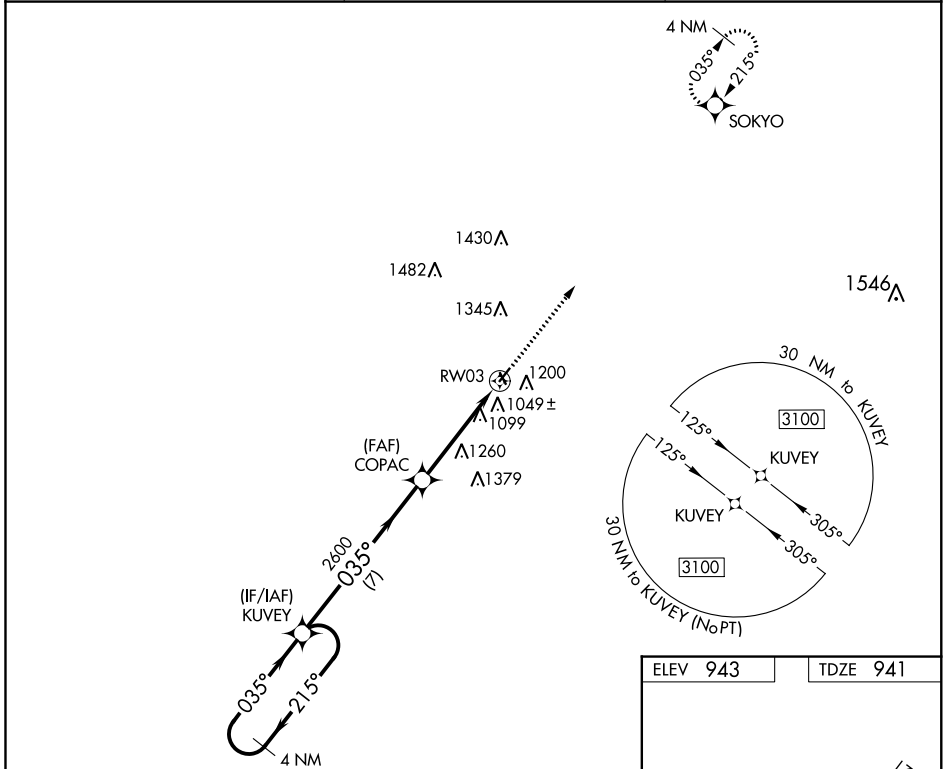
# RNAV (GPS) RWY 3

MIAMI COUNTY (K81)

**NA** Baro-VNAV NA. DME/DME RNP-0.3 NA. Use New Century Aircenter altimeter setting; when not received, use Johnson County Executive altimeter setting and increase all DA 8 feet and all MDA 20 feet. Helicopter visibility reduction below 3/4 SM NA.

MISSED APPROACH: Climb to 3100 direct SOKYO and hold.

NEW CENTURY AIRCENTER ASOS <b>135.325</b>	KANSAS CITY APP CON <b>118.9 294.7</b>	UNICOM <b>122.8 (CTAF) 0</b>
--	---	---------------------------------



ELEV 943	TDZE 941
----------	----------

MIRL Rwy 3-21 **0**  
REIL Rwy 3 and 21 **0**

CATEGORY	A	B	C	D
LPV DA	1284-1	343 (400-1)		NA
LNAV/VNAV DA	1274-1	333 (400-1)		NA
LNAV MDA	1640-1	699 (700-1)		NA
<b>C</b> CIRCLING	1640-1	697 (700-1)		NA

NC-2, 20 JUN 2019 to 18 JUL 2019

NC-2, 20 JUN 2019 to 18 JUL 2019