

VORTAC BRV	APP CRS	Rwy Idg	5000
114.5	314°	TDZE	196
Chan 92		Apt Elev	212

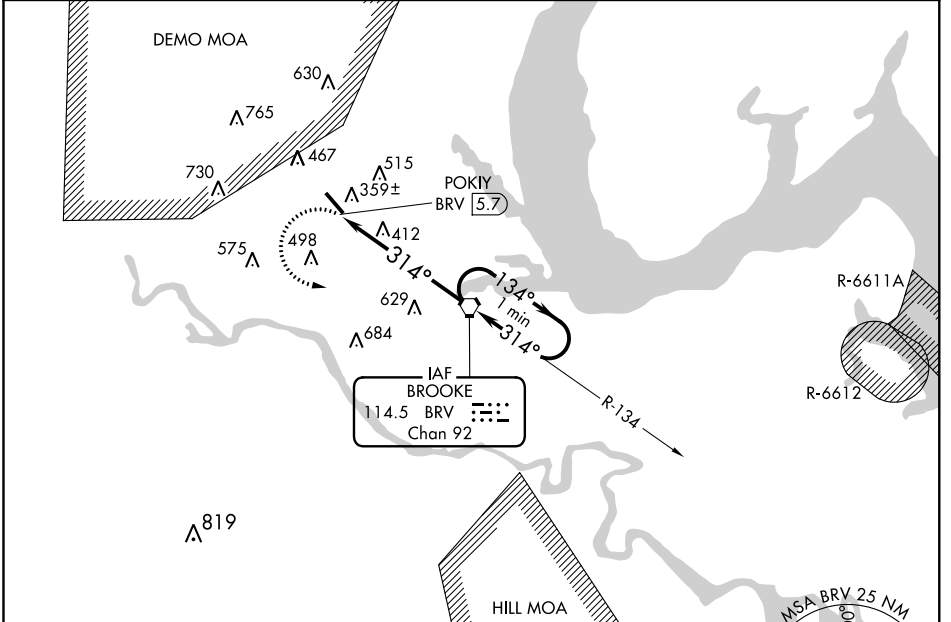
VOR RWY 33

STAFFORD RGNL (RMN)

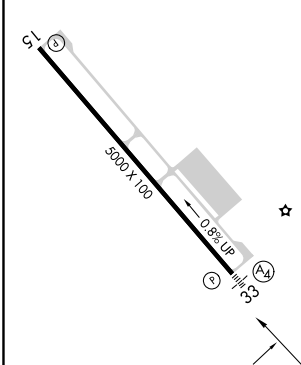
▼ If local altimeter setting not received, use Shannon, Fredericksburg, VA altimeter setting and increase all MDAs 40 feet. VDP NA with Shannon, Fredericksburg, VA altimeter setting. Inoperative table does not apply to Cat C.

MALS $(A_4) \equiv$ MISSED APPROACH: Climbing left turn to 2000 direct BRV VORTAC and hold.

AWOS-3 126.325	POTOMAC APP CON 128.525 306.925	GCO 135.075	UNICOM 122.725 (CTAF) 0
--------------------------	---	-----------------------	-----------------------------------



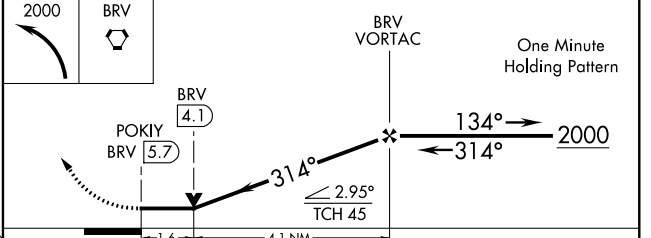
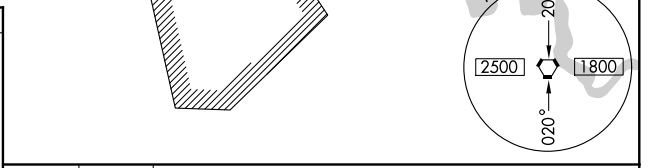
ELEV 212	TDZE 196
-----------------	-----------------



REIL Rwys 15 and 33
HIRL Rwy 15-33

FAF to MAP 5.7 NM

Knots	60	90	120	150	180
Min:Sec	5:42	3:48	2:51	2:17	1:54



CATEGORY	A	B	C	D
S-33	740-3/4 544 (600-3/4)		740-1 1/2 544 (600-1 1/2)	740-1 3/4 544 (600-1 3/4)
CIRCLING	740-1 528 (600-1)		840-1 3/4 628 (700-1 3/4)	860-2 648 (700-2)

NE-3, 20 JUN 2019 to 18 JUL 2019

NE-3, 20 JUN 2019 to 18 JUL 2019