

APP CRS 008°	Rwy Idg 4199
	TDZE 5999
	Apt Elev 6002

GPS RWY 1

VALLE (40G)

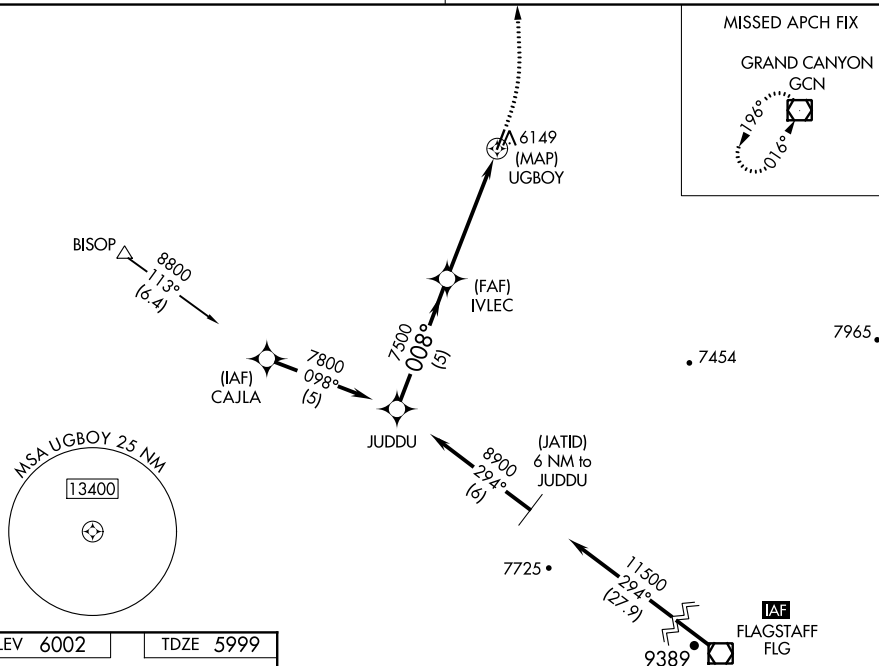
IAF ARM APPROACH MODE PRIOR TO IAF.
NA Obtain local altimeter setting on CTAF; when not received use Grand Canyon National Park altimeter setting. When neither received procedure not authorized. Procedure NA at night.

MISSED APPROACH: Climbing left turn to 10000 direct to GCN VOR/DME and hold.

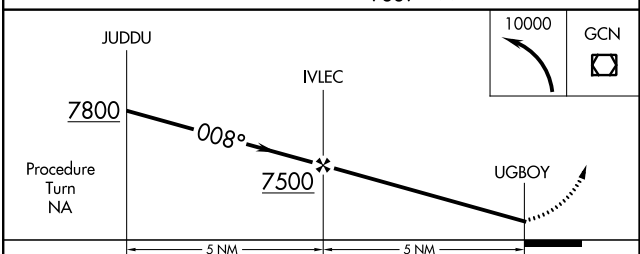
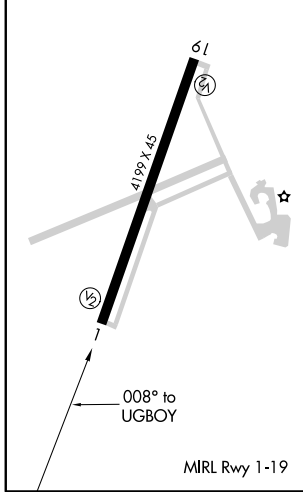
LOS ANGELES CENTER
124.85 319.2

UNICOM
122.8 (CTAF)

MISSED APCH FIX



ELEV 6002	TDZE 5999
-----------	-----------



CATEGORY	A	B	C	D
S-1	6480-1	481 (500-1)	6480-1¼ 481 (500-1¼)	NA
CIRCLING	6480-1	478 (500-1)	6500-1½ 498 (500-1½)	NA
GRAND CANYON NATIONAL PARK ALTIMETER SETTING MINIMUMS				
S-1	6620-1	621 (700-1)	6620-1¾ 621 (700-1¾)	NA
CIRCLING	6620-1	618 (700-1)	6640-1¾ 638 (700-1¾)	NA

SW-4, 20 JUN 2019 to 18 JUL 2019

SW-4, 20 JUN 2019 to 18 JUL 2019