

(YOKES6.YOKES) 18256

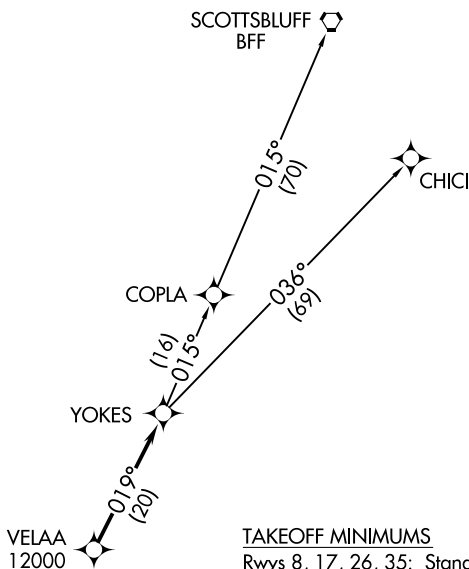
YOKES SIX DEPARTURE (RNAV)

AL-6851 (FAA)

FRONT RANGE (F'TG)
DENVER, COLORADO

ATIS
119.025
CLNC DEL
124.7
DENVER DEP CON
128.25 371.95
DENVER CLNC DEL
121.75 (when tower closed)

**TOP ALTITUDE:
FL230**



TAKEOFF MINIMUMS

Rwys 8, 17, 26, 35: Standard.

NOTE: DME/DME/IRU or GPS required.

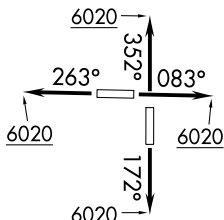
NOTE: RNAV 1.

NOTE: Turbojets only.

NOTE: Accelerate to at or above 250K above 10000.

If slower speed is required to meet crossing restrictions advise CLNC DEL prior to taxi.

NOTE: RADAR required.



NOTE: Chart not to scale.



DEPARTURE ROUTE DESCRIPTION

TAKEOFF RUNWAY 8: Climb heading 083° to 6020, then continue climb heading 083° or as assigned by ATC, thence. . . .

TAKEOFF RUNWAY 17: Climb heading 172° to 6020, then continue climb heading 172° or as assigned by ATC, thence. . . .

TAKEOFF RUNWAY 26: Climb heading 263° to 6020, then continue climb heading 263° or as assigned by ATC, thence. . . .

TAKEOFF RUNWAY 35: Climb heading 352° to 6020, then continue climb heading 352° or as assigned by ATC, thence. . . .

. . . .RADAR vectors to VELAA, then as depicted. Maintain FL230 or filed lower altitude. Expect higher filed altitude 10 minutes after departure.

CHICI TRANSITION (YOKES6.CHICI)

SCOTTSSLUFF TRANSITION (YOKES6.BFF)

YOKES SIX DEPARTURE (RNAV)

(YOKES6.YOKES) 13SEP18

DENVER, COLORADO
FRONT RANGE (F'TG)

SW-1, 20 JUN 2019 to 18 JUL 2019

SW-1, 20 JUN 2019 to 18 JUL 2019