

APP CRS	Rwy Idg	3922
255°	TDZE	307
	Apt Elev	308

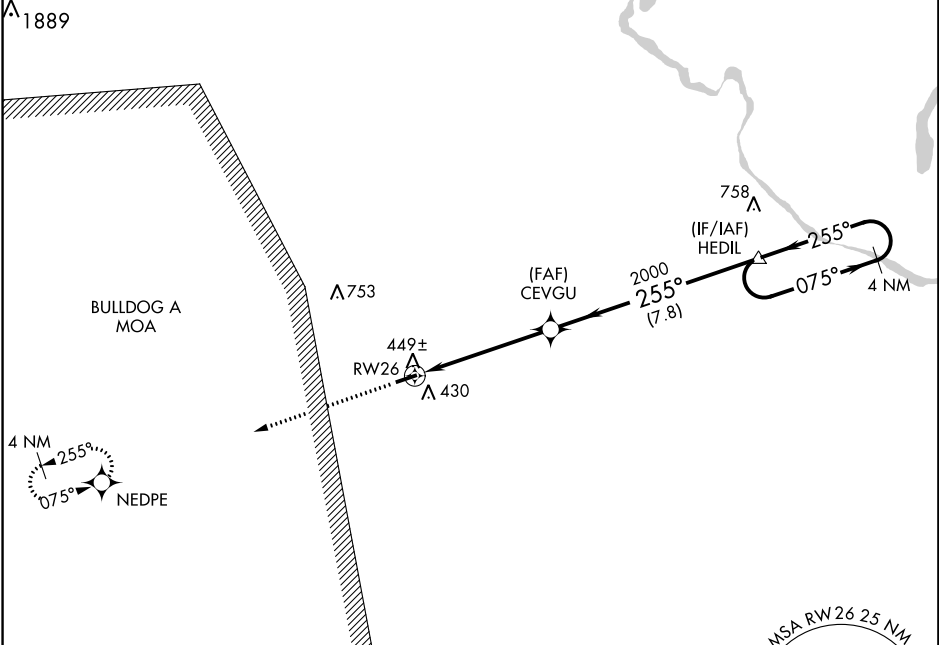
RNAV (GPS) RWY 26

BURKE COUNTY (B.X.G)

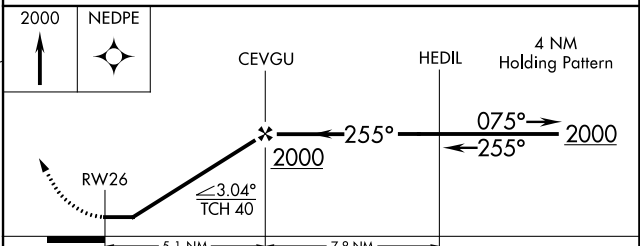
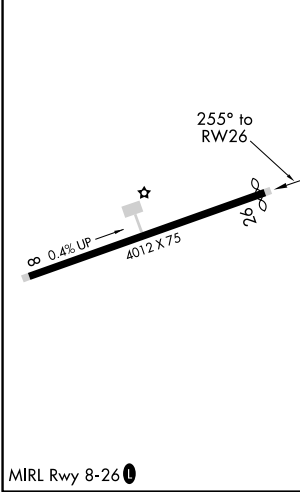
RNP APCH
 Use Augusta Rgnl at Bush Field altimeter setting.
 Procedure NA at night.
 Rwy 26 helicopter visibility reduction below 1 SM NA.

MISSED APPROACH: Climb to 2000 direct NEDPE and hold.

AUGUSTA RGNL AT BUSH FIELD ASOS 132.75	AUGUSTA APP CON★ 126.8 270.3	CTAF 122.9
--------------------------------------------------	----------------------------------------	----------------------



ELEV	308	TDZE	307
------	-----	------	-----



CATEGORY	A	B	C	D
LNAV MDA	800-1	493 (500-1)	800-1 3/8 493 (500-1 3/8)	NA
CIRCLING	860-1	552 (600-1)	860-1 1/2 552 (600-1 1/2)	NA

SE-4, 20 JUN 2019 to 18 JUL 2019

SE-4, 20 JUN 2019 to 18 JUL 2019