

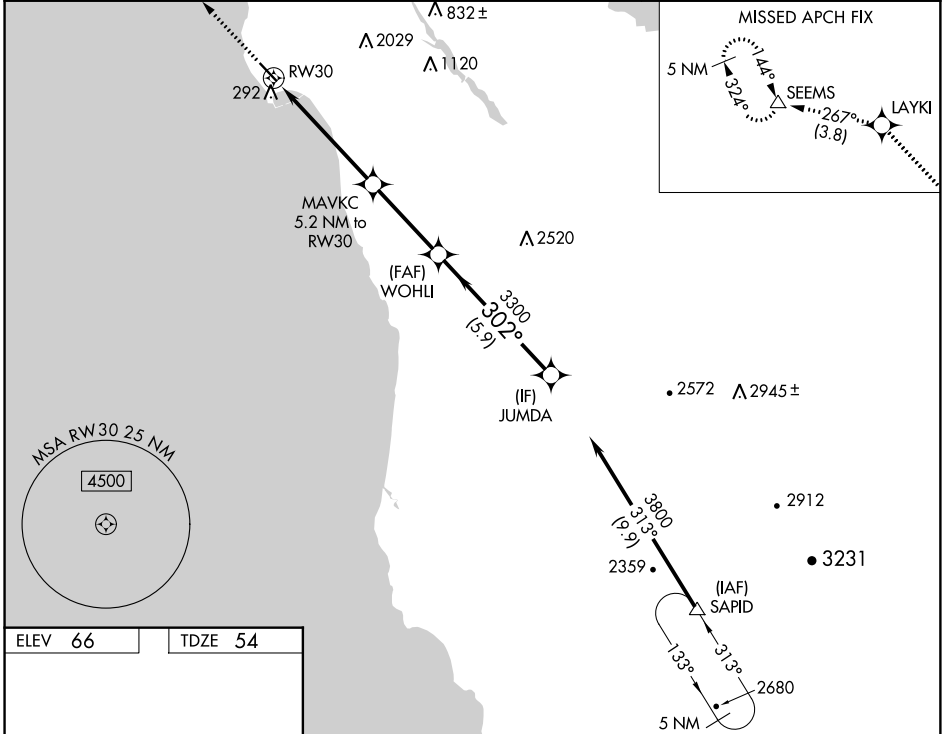
WAAS CH 50302 W30A	APP CRS 302°	Rwy Idg TDZE Apt Elev	4238 54 66
--	------------------------	-----------------------------	---------------------------------------

RNAV (GPS) RWY 30

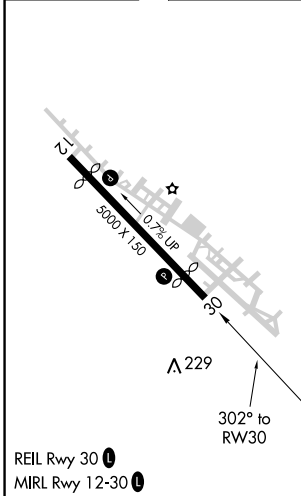
HALF MOON BAY (HAF)

RNP APCH. ▼ Circling NA east of Rwy 12-30.	MISSED APPROACH: Climb to 4000 direct LAYKI and on track 267° to SEEMS and hold, continue climb-in-hold to 4000.
--	--

AWOS-3 127.275	NORCAL APP CON 135.1 307.2	UNICOM 122.8 (CTAF) ①
--------------------------	--------------------------------------	---------------------------------



ELEV 66	TDZE 54
---------	---------



4000	LAYKI	tr 267°	SEEMS	VGSI and RNAV glidepath not coincident (VGSI Angle 3.00/TCH 24).
WOHLI	JUMDA	3300	3800	
*LNAV only		MAVKC 5.2 NM to RWY30		
	*1.8 NM to RWY30	302°	3300	GP 3.50° TCH 40
	1.8 NM	3.4 NM	3.4 NM	5.9 NM
CATEGORY	A	B	C	D
LPV DA	381-1 327 (400-1)			
LNAV MDA	620-1 566 (600-1)		620-1½ 566 (600-1½)	
CIRCLING	660-1 594 (600-1)	660-1½ 594 (600-1½)		660-2 594 (600-2)

SW-2, 20 JUN 2019 to 18 JUL 2019

SW-2, 20 JUN 2019 to 18 JUL 2019