

WAAS CH <b>50200</b> <b>W10A</b>	APP CRS <b>097°</b>	Rwy Idg TDZE Apt Elev	<b>5002</b> <b>600</b> <b>602</b>
--	------------------------	-----------------------------	---

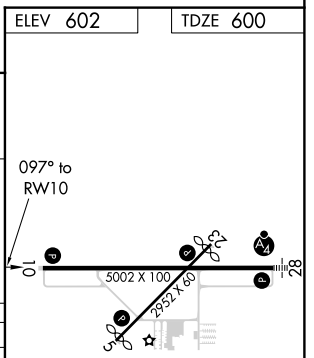
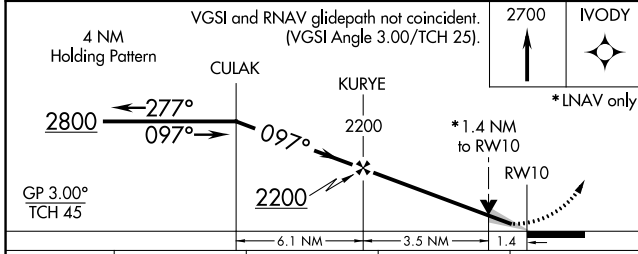
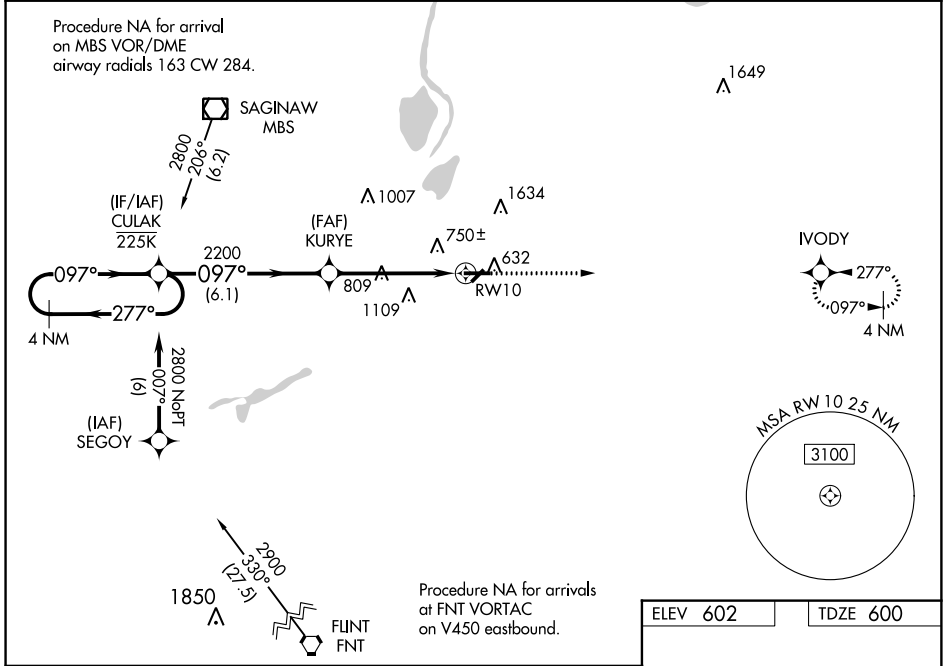
# RNAV (GPS) RWY 10

SAGINAW COUNTY H W BROWNE (HYX)

**⚠** For uncompensated Baro-VNAV systems, LNAV/VNAV NA below -18°C (0°F) or above 54°C (130°F). Circling NA for Cat C north of Rwy 10-28. Circling Rwy 5, 23 NA at night. DME/DME RNP-0.3 NA.

MISSED APPROACH: Climb to 2700 direct IVODY and hold.

AWOS-3 <b>118.325</b>	GREAT LAKES APP CON★ <b>120.95 235.625</b>	UNICOM <b>122.8 (CTAF) 0</b>
--------------------------	---	---------------------------------



CATEGORY	A	B	C	D
LPV DA	800-3/4	200 (200-3/4)		NA
LNAV/VNAV DA	1018-13/8	418 (500-13/8)		NA
LNAV MDA	1060-1	460 (500-1)	1060-13/8 460 (500-13/8)	NA
<b>C</b> CIRCLING	1100-1	498 (500-1)	1460-21/2 858 (900-21/2)	NA

REIL Rwy 10 **0**  
MIRL Rwy 5-23 and 10-28 **0**

EC-1, 20 JUN 2019 to 18 JUL 2019

EC-1, 20 JUN 2019 to 18 JUL 2019