

WAAS CH 50424 W26A	APP CRS 264°	Rwy Idg TDZE Apt Elev	3297 881 881
--	------------------------	-----------------------------	---

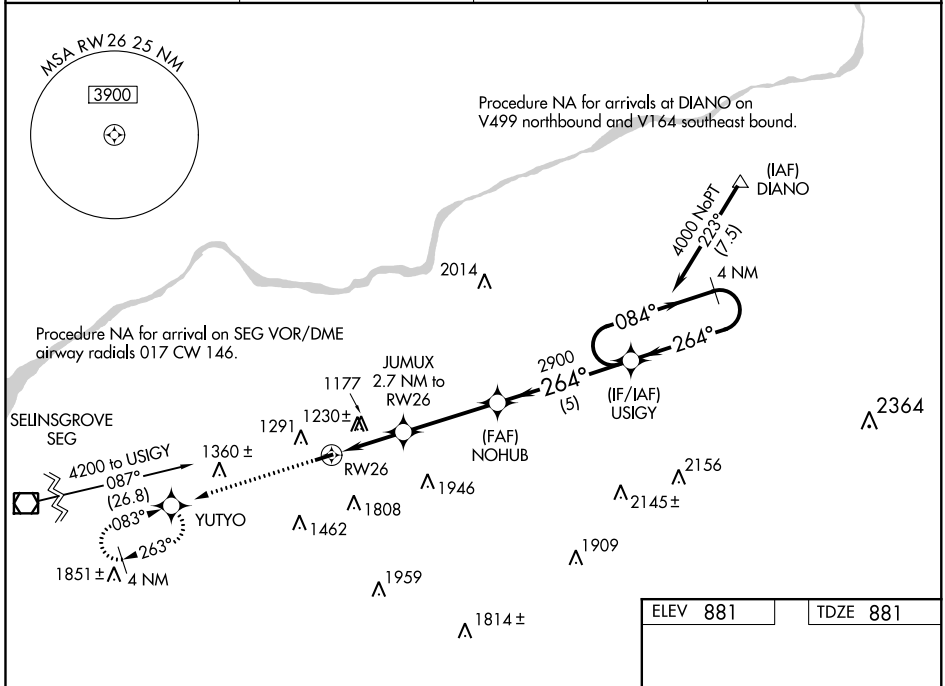
RNAV (GPS) RWY 26

NORTHUMBERLAND COUNTY (N79)

NA Baro-VNAV NA when using Selingsgrove altimeter setting. For uncompensated Baro-VNAV systems, LNAV/VNAV NA below -16°C (4°F) or above 54°C (130°F). Helicopter visibility reduction below 1 SM NA. DME/DME RNP-0.3 NA. Procedure NA at night. When local altimeter setting not received, use Selingsgrove altimeter setting and increase all DA 94 feet and all MDA 100 feet, increase visibility LPV all Cats 3/8 SM; LNAV/VNAV all Cats 1/4 SM; LNAV Cat C 1/4 mile.

MISSED APPROACH:
Climb to 3000 direct YUTYO and hold.

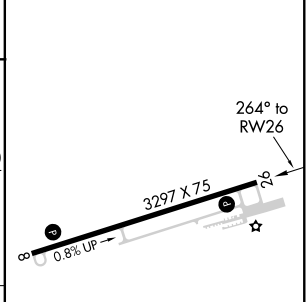
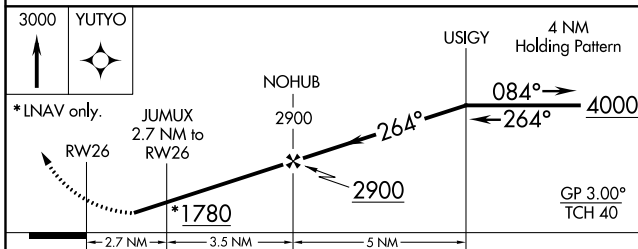
AWOS-3 119.175	HARRISBURG APP CON 118.25 269.45	UNICOM 122.8 (CTAF)	121.8 0
--------------------------	--	-------------------------------	----------------



NE-4, 20 JUN 2019 to 18 JUL 2019

NE-4, 20 JUN 2019 to 18 JUL 2019

ELEV 881	TDZE 881
-----------------	-----------------



CATEGORY	A	B	C	D
LPV DA	1436-1 ⁷ / ₈	555 (600-1 ⁷ / ₈)		NA
LNAV/VNAV DA	1559-2 ¹ / ₂	678 (700-2 ¹ / ₂)		NA
LNAV MDA	1480-1	599 (600-1)	1480-1 ³ / ₄ 599 (600-1 ³ / ₄)	NA
CIRCLING	1820-1 ¹ / ₄ 939 (1000-1 ¹ / ₄)	1860-1 ¹ / ₂ 979 (1000-1 ¹ / ₂)	1880-3 999 (1000-3)	NA

MIRL Rwy 8-26 **0**
REIL Rwy 8 and 26