

(EKR3.EKR) 18200

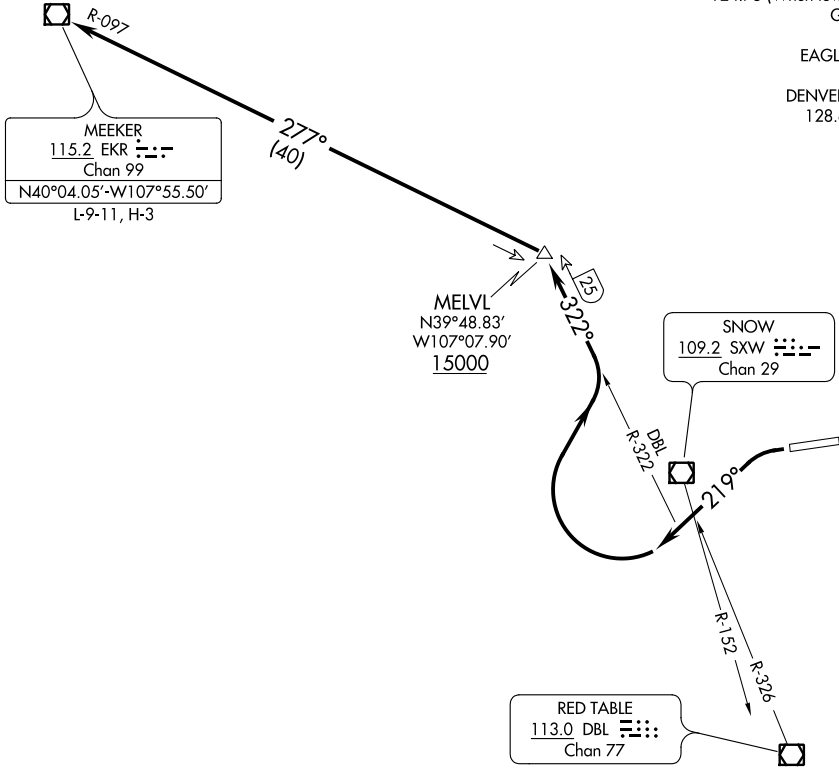
# MEEKER THREE DEPARTURE

AL-6403 (FAA)

EAGLE COUNTY RGNL (E/G/E)  
EAGLE, COLORADO

**TOP ALTITUDE:  
15000**

ATIS 135.575  
 CLNC DEL 124.75  
 DENVER CLNC DEL 124.75  
 124.75 (When tower closed)  
 GND CON 121.8  
 EAGLE TOWER★ 119.8  
 DENVER CENTER 128.65 282.2



### TAKEOFF MINIMUMS

Rwy 7: NA - ATC

Rwy 25: Standard with minimum climb of 815' per NM to 15000.

NOTE: Chart not to scale.



### DEPARTURE ROUTE DESCRIPTION

**TAKEOFF RUNWAY 25:** Climbing left turn heading 219°, upon crossing SXW R-152 or DBL R-326 turn right via DBL R-322 to MELVL INT/DBL 25 DME then turn left via EKR R-097 to EKR VOR/DME. Cross MELVL at or above 15000, expect filed altitude 10 minutes after departure.

# MEEKER THREE DEPARTURE

(EKR3.EKR) 19JUL18

EAGLE, COLORADO  
EAGLE COUNTY RGNL (E/G/E)

SW-1, 20 JUN 2019 to 18 JUL 2019

SW-1, 20 JUN 2019 to 18 JUL 2019