

WAAS CH <b>56221</b> <b>W33A</b>	APP CRS <b>331°</b>	Rwy ldg TDZE Apt Elev	<b>5500</b> <b>217</b> <b>236</b>
----------------------------------------	------------------------	-----------------------------	-----------------------------------------

# RNAV (GPS) RWY 33

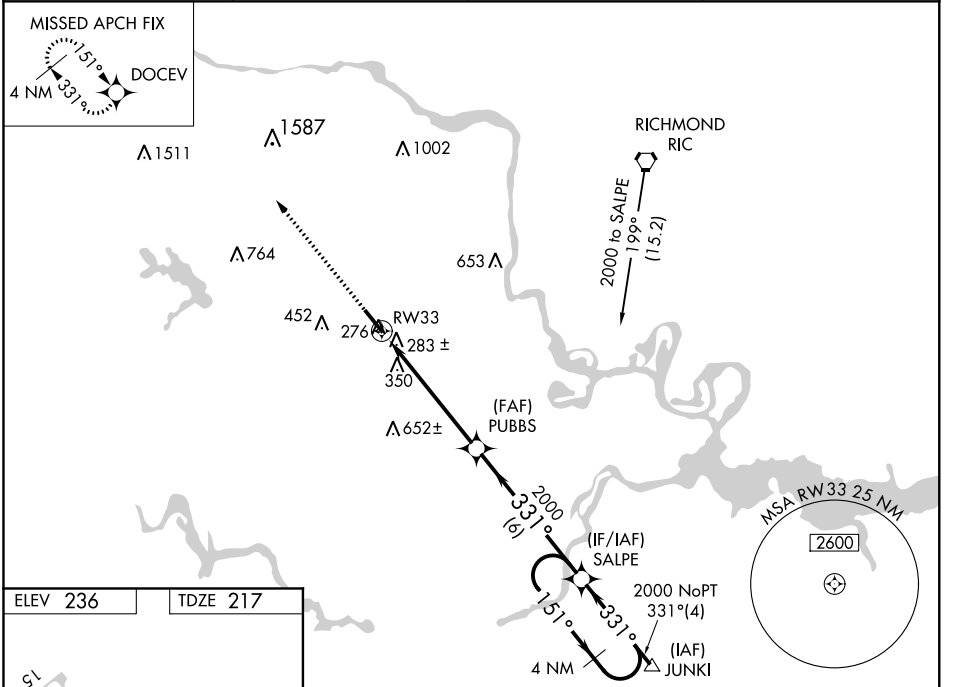
RICHMOND EXECUTIVE-CHESTERFIELD COUNTY (F'CI)

**▼** For uncompensated Baro-VNAV systems, LNAV/VNAV NA below -15°C (5°F) or above 54°C (130°F). When local altimeter setting not received, use Richmond Intl altimeter setting and increase all DA 36 feet and all MDA 40 feet; increase LPV and LNAV/VNAV all Cats and LNAV Cats C/D and Circling Cat C visibility ½ mile. DME/DME RNP-0.3 NA. For inop MALSRL, increase LPV all Cats visibility to 1 mile and LNAV Cat C/D to 1 ½ mile. For inop MALSRL when using Richmond Intl altimeter setting, increase LPV all Cats visibility to 1 ½ mile. Baro-VNAV and VDP NA when using Richmond Intl altimeter setting.

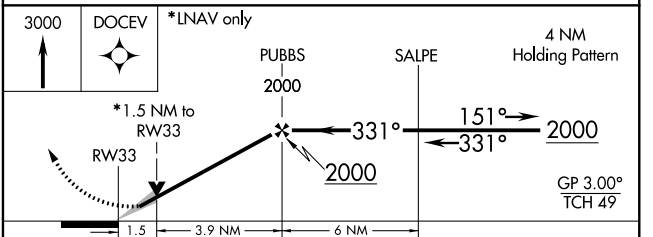
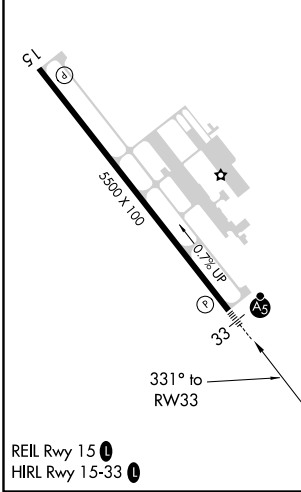
**⚠ NA**

**MALSRL**  
MISSED APPROACH: Climb to 3000 direct DOCEV and hold.

AWOS-3PT <b>128.625</b>	POTOMAC APP CON <b>126.75 307.2</b>	CLNC DEL <b>124.6</b>	UNICOM <b>123.05 (CTAF)</b>
----------------------------	----------------------------------------	--------------------------	--------------------------------



ELEV 236	TDZE 217
----------	----------



CATEGORY	A	B	C	D
LPV DA	510-½ 293 (300-½)			
LNAV/VNAV DA	598-⅞ 381 (400-⅞)			
LNAV MDA	720-½	503 (500-½)	720-1	503 (500-1)
CIRCLING	720-1	484 (500-1)	760-1½ 524 (600-1½)	800-2 564 (600-2)

# RNAV (GPS) RWY 33

NE-3, 20 JUN 2019 to 18 JUL 2019

NE-3, 20 JUN 2019 to 18 JUL 2019