

WAAS CH <b>65836</b> W07A	APP CRS <b>074°</b>	Rwy Idg TDZE Apt Elev	<b>4001</b> <b>1067</b> <b>1067</b>
---------------------------------	------------------------	-----------------------------	---

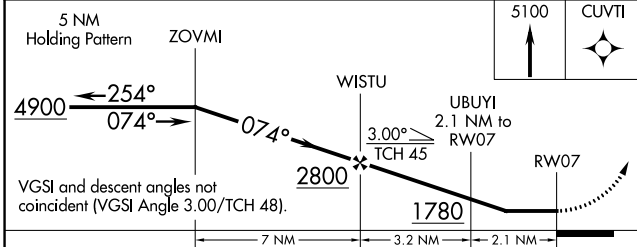
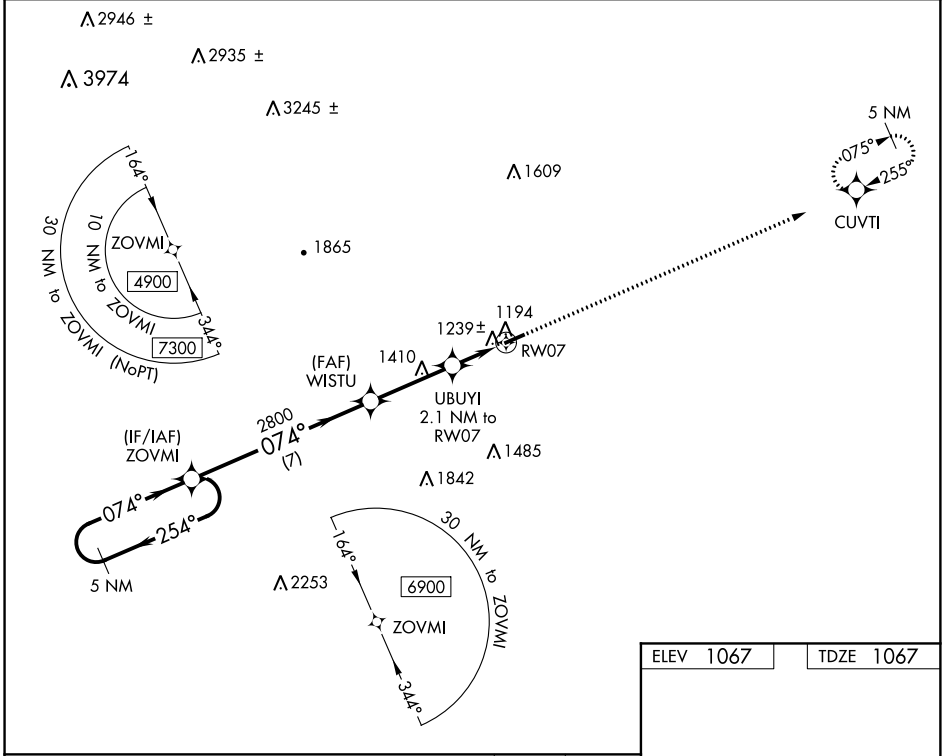
# RNAV (GPS) RWY 7

ELKIN MUNI (ZEF)

**▼** DME/DME RNP-0.3 NA. Procedure NA at night. Obtain local altimeter setting on CTAF; when not received, use Mount Airy altimeter setting and increase MDA 80 feet and Cats C/D visibility ¼ mile. Helicopter visibility reduction below 1 SM NA.

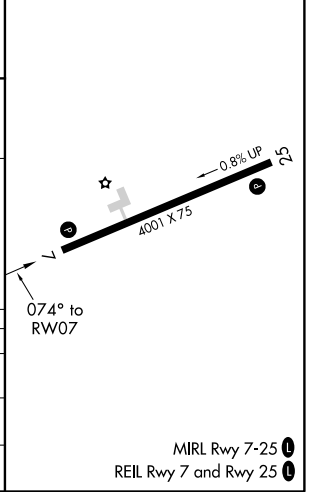
**▲** NA MISSED APPROACH: Climb to 5100 direct CUVTI and hold, continue climb-in-hold to 5100.

ATLANTA CENTER <b>125.15 263.0</b>	UNICOM <b>123.05 (CTAF)</b>
---------------------------------------	--------------------------------



ELEV 1067	TDZE 1067
-----------	-----------

CATEGORY	A	B	C	D
LP MDA	1460-1	393 (400-1)	1460-1½	393 (400-1½)
LNAV MDA	1500-1	433 (500-1)	1500-1¼	433 (500-1¼)
<b>C</b> CIRCLING	1540-1 473 (500-1)	1600-1 533 (600-1)	1680-1¾ 613 (700-1¾)	1840-2½ 773 (800-2½)



SE-2, 20 JUN 2019 to 18 JUL 2019

SE-2, 20 JUN 2019 to 18 JUL 2019