

WAAS CH 58236 W10A	APP CRS 102°	Rwy Idg 5350 TDZE 28 Apt Elev 28
--	------------------------	---

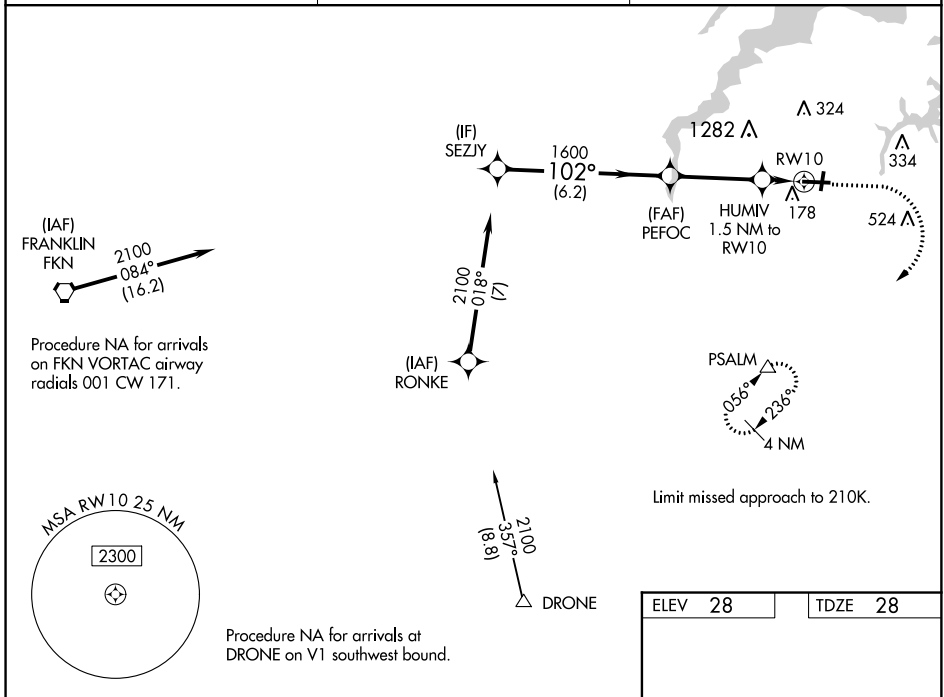
RNAV (GPS) RWY 10

HAMPTON ROADS EXECUTIVE (PVG)

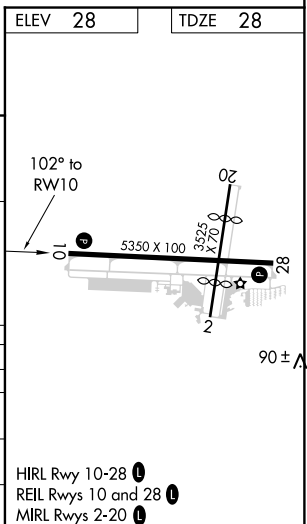
⚠ Baro-VNAV NA when using Norfolk Intl altimeter setting. For uncompensated Baro-VNAV systems, LNAV/VNAV NA below -15°C (5°F) or above 54°C (130°F).
⚠ DME/DME RNP-0.3 NA. When local altimeter setting not received, use Norfolk Intl altimeter setting and increase all DA 33 feet and all MDA 40 feet; increase LNAV/VNAV all Cats visibility and LNAV Cat C visibility 1/8 mile. Circling NA for Cat C N of Rwy 10-28. Circling NA to Rwy 2 and 20. Helicopter visibility reduction below 1 SM NA.

MISSED APPROACH: Climb to 1600 then climbing right turn to 2500 direct PSALM and hold.

AWOS-3PT 118.375	NORFOLK APP CON 118.9 353.7	UNICOM 122.725 (CTAF) 0
----------------------------	---------------------------------------	-----------------------------------



	SEZJY		PFOC		HUMIV 1.5 NM to RW10	RW10
	2100	102°	1600	2500	PSALM	
	GP 3.00° TCH 40				*LNAV only.	
			1600			
			*540			
			6.2 NM	3.3 NM	1.5 NM	
CATEGORY	A	B	C	D		
LPV DA		228-1	200 (200-1)	NA		
LNAV/VNAV DA		432-1 3/8	404 (500-1 3/8)	NA		
LNAV MDA		420-1	392 (400-1)	420-1 1/8 392 (400-1 1/8)	NA	
CIRCLING		500-1	472 (500-1)	780-2 1/4 752 (800-2 1/4)	NA	



NE-3, 20 JUN 2019 to 18 JUL 2019

NE-3, 20 JUN 2019 to 18 JUL 2019