

APP CRS	Rwy Idg	<b>2804</b>
<b>084°</b>	TDZE	<b>674</b>
	Apt Elev	<b>674</b>

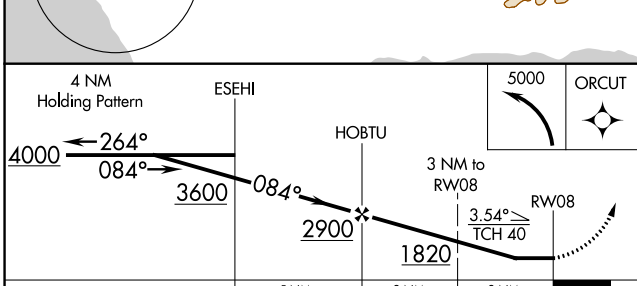
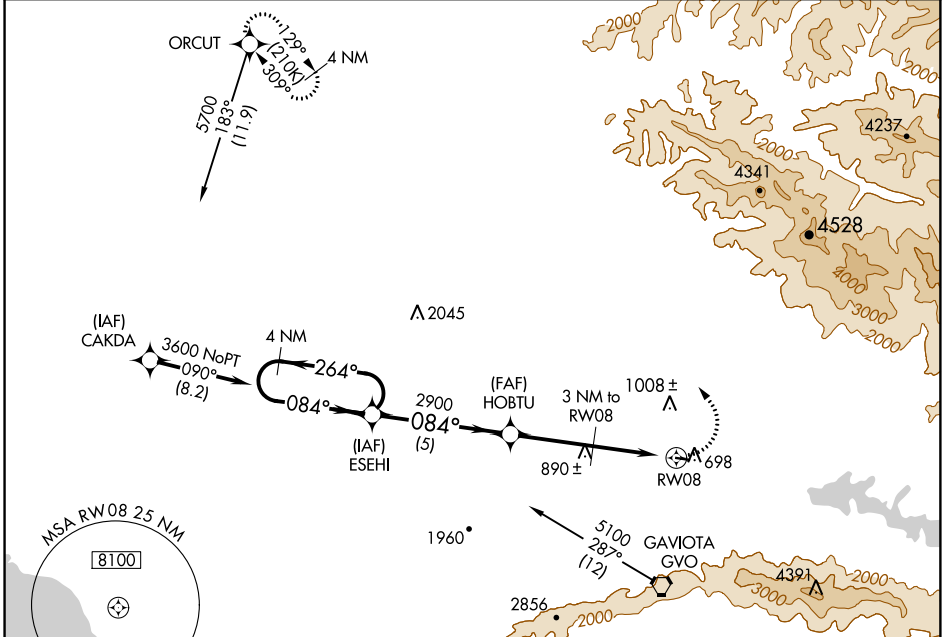
# GPS RWY 8

SANTA YNEZ (IZA)

**NA** When local altimeter setting not received, use Lompoc altimeter setting. Helicopter visibility reduction below 3/4 SM NA.

**MISSED APPROACH:** Climbing left turn to 5000 direct ORCUT WP and hold.

<b>AWOS-3</b> <b>118.075</b>	<b>SANTA BARBARA APP CON*</b> <b>124.15 327.8</b>	<b>UNICOM</b> <b>122.8 (CTAF) 0</b>
---------------------------------	--	--



CATEGORY	A	B	C	D
S-8	1060-1	386 (400-1)		NA
CIRCLING	1120-1 446 (500-1)	1160-1 486 (500-1)		NA
<b>LOMPOC ALTIMETER SETTING MINIMUMS</b>				
S-8	1600-1¼	926 (1000-1¼)		NA
CIRCLING	1640-1¼ 966 (1000-1¼)	1680-1½ 1006 (1100-1½)		NA

ELEV 674	TDZE 674
----------	----------

RWY 8: 2803 X 75, 0.7% UP, 20' elevation.

REIL Rwy 8 and 26 0  
MIRL Rwy 8-26 0

SW-3, 20 JUN 2019 to 18 JUL 2019

SW-3, 20 JUN 2019 to 18 JUL 2019