

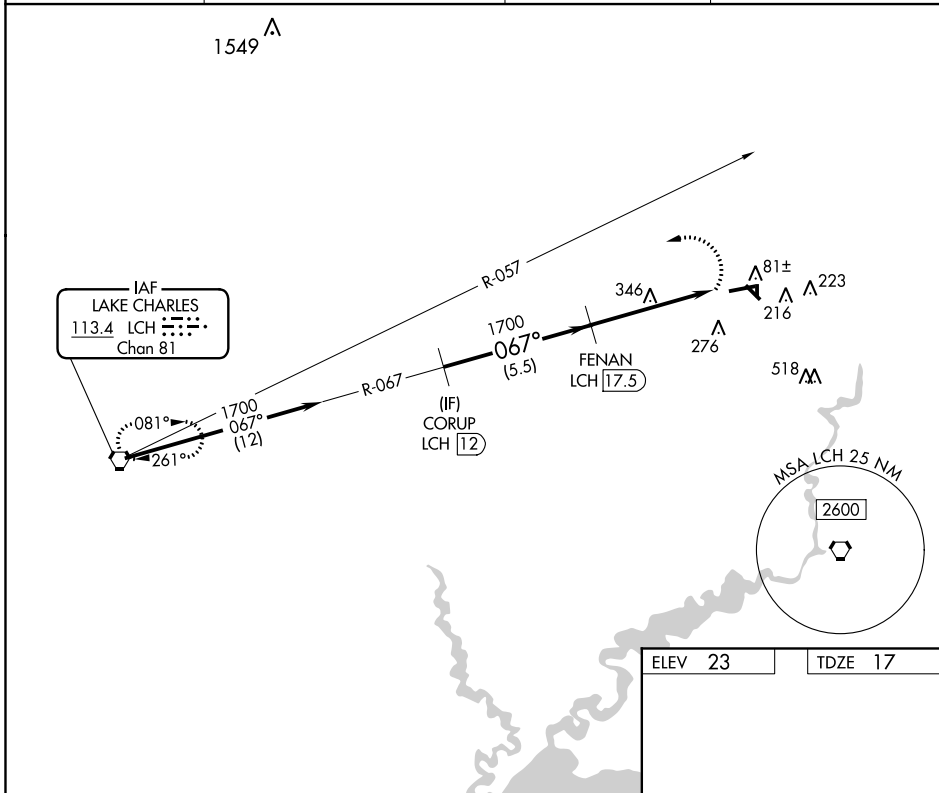
VORTAC LCH	APP CRS	Rwy Idg	<b>5002</b>
<b>113.4</b>	<b>067°</b>	TDZE	<b>17</b>
Chan <b>81</b>		Apt Elev	<b>23</b>

# VOR/DME RWY 8

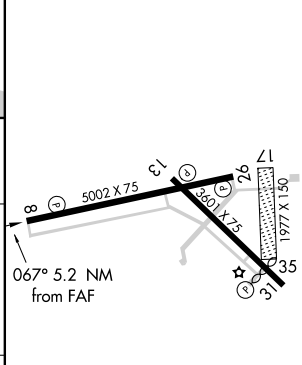
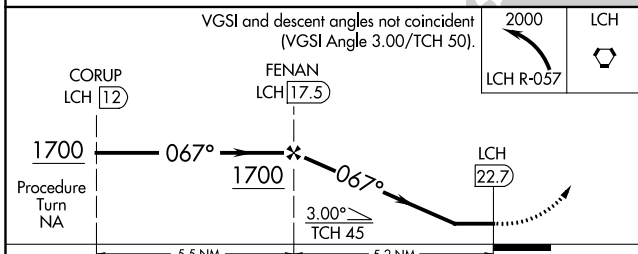
JENNINGS (3R7)

Use Lake Charles Rgnl altimeter setting.	MISSED APPROACH: Climbing left turn to 2000 via LCH R-057 to LCH VORTAC and hold.
--	---

AWOS-3PT <b>121.150</b>	LAKE CHARLES APP CON * <b>119.8 282.3</b>	GCO <b>135.075</b>	UNICOM <b>122.8 (CTAF)</b>
----------------------------	--	-----------------------	-------------------------------



ELEV 23	TDZE 17
---------	---------



CATEGORY	A	B	C	D
S-8	720-1 703 (700-1)	720-1½ 703 (700-1¼)	720-2 703 (700-2)	NA
CIRCLING	720-1 697 (700-1)	720-1½ 697 (700-1¼)	720-2 697 (700-2)	NA

REIL Rwy 8, 26, 13, and 31  
MIRL Rwy 8-26 and 13-31

SC-4, 20 JUN 2019 to 18 JUL 2019

SC-4, 20 JUN 2019 to 18 JUL 2019