

WAAS CH 61019 W02A	APP CRS 022°	Rwy ldg TDZE Apt Elev	3999 929 946
--	------------------------	-----------------------------	---

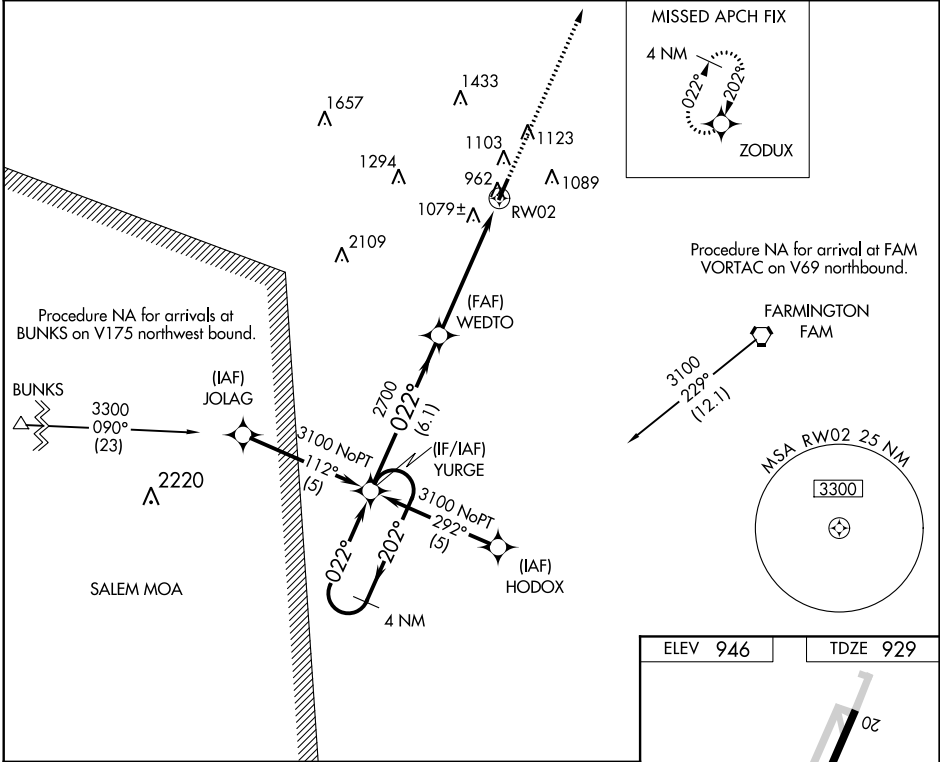
RNAV (GPS) RWY 2

FARMINGTON RGNL (FAM)

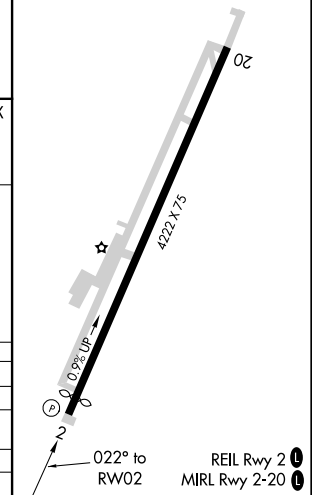
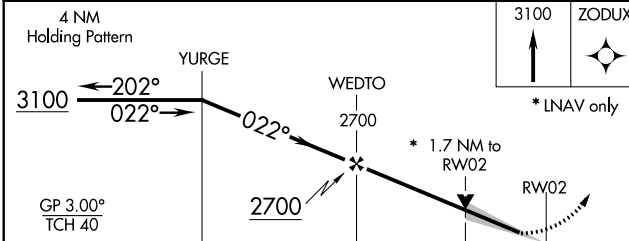
⚠ For uncompensated Baro-VNAV systems, LNAV/VNAV NA below -16°C (4°F) or above 54°C (130°F).
⚠ DME/DME RNP-0.3 NA. VDP and Baro-VNAV NA when using Sparta altimeter setting. When local altimeter setting not received, use Sparta altimeter setting and increase all DA 1.54 feet and all MDA 1.60 feet; increase LPV and LNAV/VNAV all Cats visibility 1/2 mile. Circling to Rwy 20 NA at night.

MISSED APPROACH:
Climb to 3100 direct ZODUX and hold.

AWOS-3PT 119.275	KANSAS CITY CENTER 127.475 346.275	UNICOM 122.8 (CTAF) ①
----------------------------	--	---------------------------------



ELEV 946	TDZE 929
----------	----------



CATEGORY		A	B	C	D
LPV DA		1179-1	250 (300-1)		NA
LNAV/VNAV DA		1479-2	550 (600-2)		NA
LNAV MDA		1500-1	571 (600-1)		NA
CIRCLING		1500-1	554 (600-1)		NA

NC-3, 20 JUN 2019 to 18 JUL 2019

NC-3, 20 JUN 2019 to 18 JUL 2019