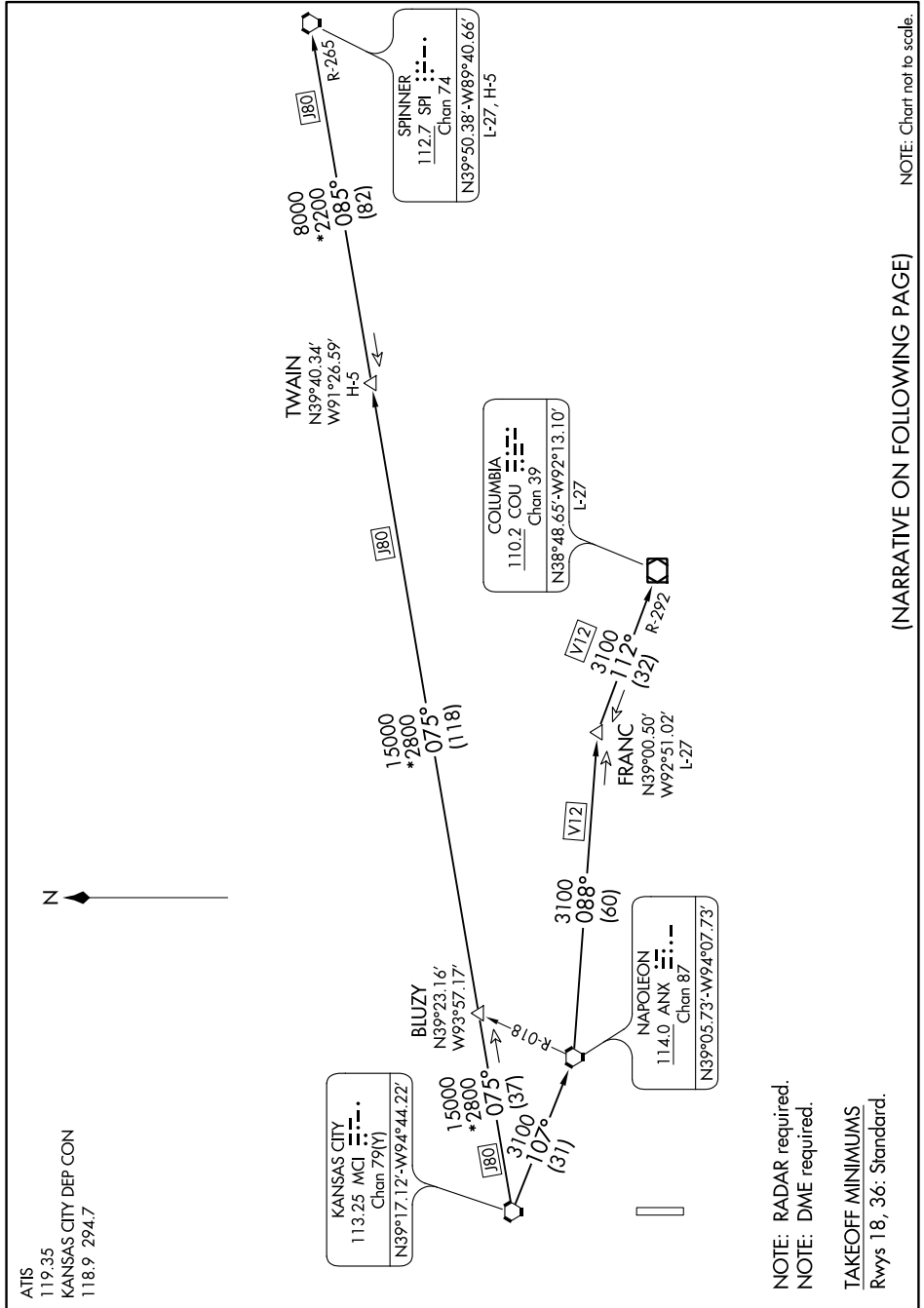


# LAKES THREE DEPARTURE

AL-5687 (FAA)

JOHNSON COUNTY EXECUTIVE (OJC)  
OLATHE, KANSAS

NC-2, 20 JUN 2019 to 18 JUL 2019



NOTE: Chart not to scale.

(NARRATIVE ON FOLLOWING PAGE)

NC-2, 20 JUN 2019 to 18 JUL 2019

NOTE: RADAR required.  
NOTE: DME required.

TAKEOFF MINIMUMS  
Rwys 18, 36: Standard.

# LAKES THREE DEPARTURE