

(SETHY4.SETHY) 18312

AL-5475 (FAA)

VIRGINIA TECH/MONTGOMERY EXECUTIVE (BCB)

SETHY FOUR DEPARTURE (RNAV)

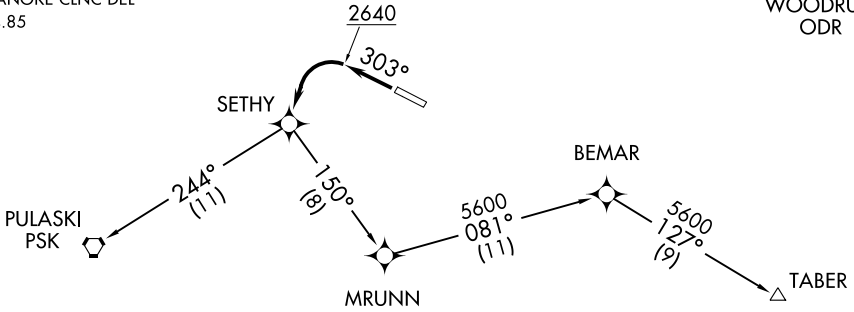
BLACKSBURG, VIRGINIA

AWOS-3
 133.325
 CTAF
 123.05
 ROANOKE DEP CON
 126.9 339.8
 ROANOKE CLNC DEL
 124.85

**TOP ALTITUDE:
 6000**

NOTE: Aircraft on TABER transition,
 do not exceed 220K until
 passing SETHY.

ROANOKE ROA
 WOODRUM ODR



NOTE: GPS Required.
 NOTE: Radar Required.
 NOTE: RNAV-1.
 NOTE: When in Radar contact expect vectors to filed/assigned route.

TAKEOFF MINIMUMS:

Rwy 12: NA-ATC.
 Rwy 30: Standard with minimum climb of 300' per NM to 2640.

NOTE: Chart not to scale.

DEPARTURE ROUTE DESCRIPTION

TAKEOFF RUNWAY 30: Climb heading 303° to 2640, then left turn direct SETHY,
 Thence

. . . .Via transition. Maintain 6000, expect clearance to filed altitude/flight level
 10 minutes after departure.

PULASKI TRANSITION (SETHY4.PSK):
TABER TRANSITION (SETHY4.TABER):

SETHY FOUR DEPARTURE (RNAV)
 (SETHY4.SETHY) 10NOV16

BLACKSBURG, VIRGINIA
 VIRGINIA TECH/MONTGOMERY EXECUTIVE (BCB)

NE-3, 20 JUN 2019 to 18 JUL 2019

NE-3, 20 JUN 2019 to 18 JUL 2019