

WAAS CH 56408 W36A	APP CRS 001°	Rwy Idg 4064 TDZE 16 Apt Elev 16
--	------------------------	---

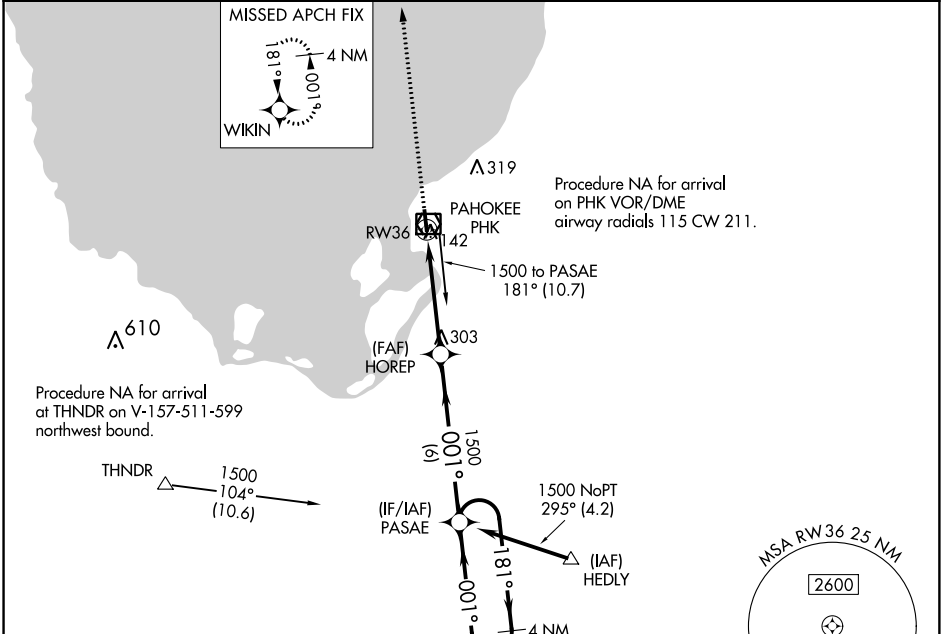
RNAV (GPS) RWY 36

PALM BEACH COUNTY GLADES (PHK)

▽ Baro-VNAV NA. DME/DME RNP-0.3 NA.
△ NA Use Palm Beach Intl altimeter setting, when not received, procedure NA.

MISSED APPROACH: Climb to 2000 direct WIKIN and hold.

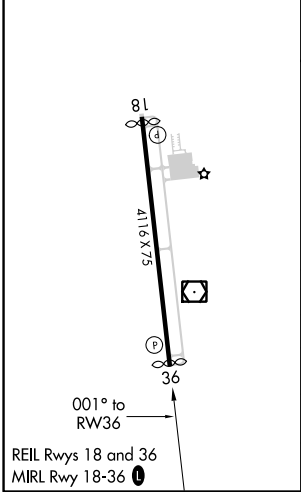
PALM BEACH INTL ASOS 123.75	PALM BEACH APP CON 128.3 317.4	UNICOM 122.8 (CTAF) 0
---------------------------------------	--	---------------------------------



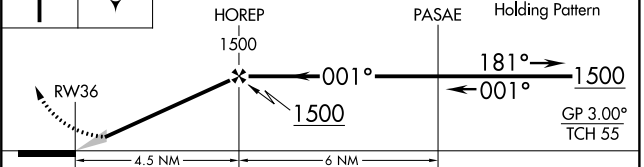
SE-3, 20 JUN 2019 to 18 JUL 2019

SE-3, 20 JUN 2019 to 18 JUL 2019

ELEV 16	D	TDZE 16
---------	----------	---------



2000 WIKIN VGSI and RNAV glidepath not coincident (VGSI Angle 3.00/TCH 44).



CATEGORY	A	B	C	D
LPV DA	471-1½		455 (500-1½)	
LNAV/VNAV DA	429-1¾		413 (500-1¾)	
LNAV MDA	520-1	504 (600-1)	520-1¾	504 (600-1¾)
C CIRCLING	580-1	564 (600-1)	760-2¼ 744 (800-2¼)	760-2½ 744 (800-2½)