

WAAS CH <b>53408</b> <b>W18A</b>	APP CRS <b>181°</b>	Rwy Idg TDZE Apt Elev	<b>4016</b> <b>16</b> <b>16</b>
--	------------------------	-----------------------------	---------------------------------------

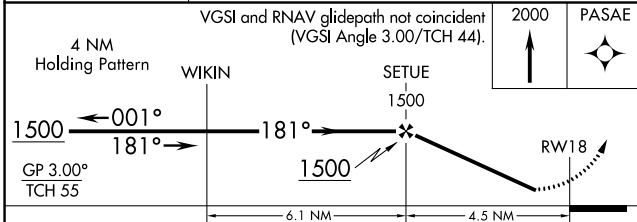
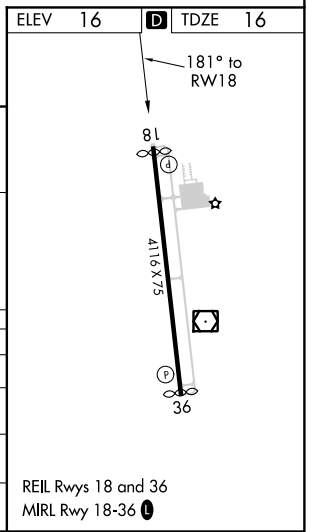
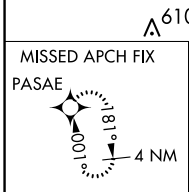
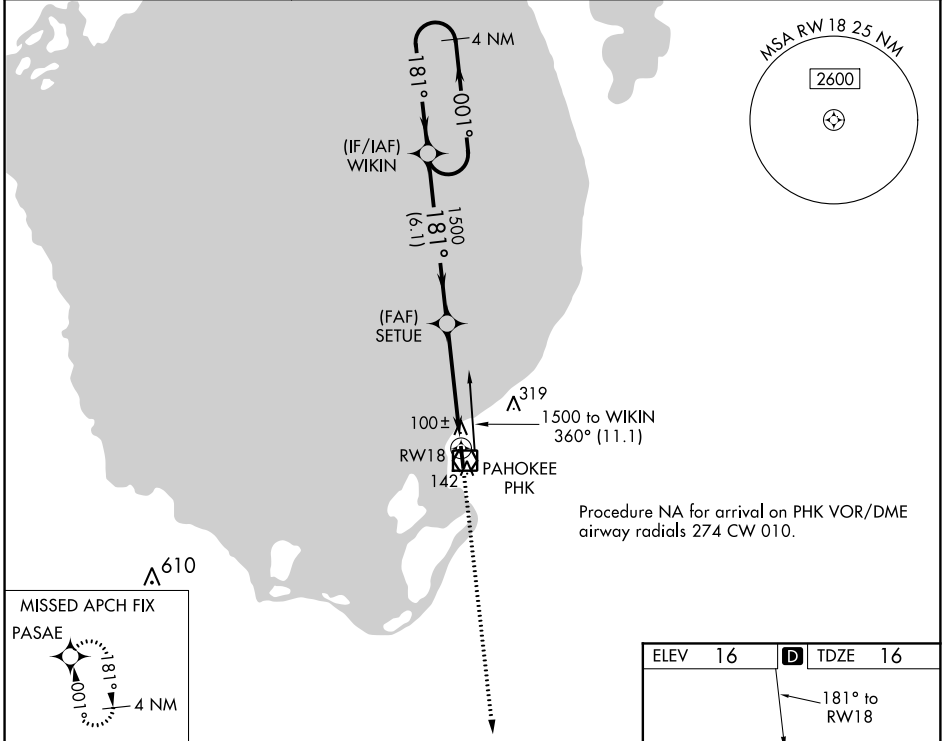
# RNAV (GPS) RWY 18

PALM BEACH COUNTY GLADES (PHK)

**Baro-VNAV NA.** Rwy 18 helicopter visibility reduction below  $\frac{3}{4}$  SM NA.  
**DME/DME RNP-0.3 NA.** Use Palm Beach Intl altimeter setting, when not received procedure NA.

**MISSED APPROACH:** Climb to 2000 direct PASAE and hold.

PALM BEACH INTL ASOS <b>123.75</b>	PALM BEACH APP CON <b>128.3 317.4</b>	UNICOM <b>122.8 (CTAF) 0</b>
---------------------------------------	--	---------------------------------



CATEGORY	A	B	C	D
LPV DA		358-1 $\frac{1}{8}$	342 (400-1 $\frac{1}{8}$ )	
LNAV/VNAV DA		342-1	326 (400-1)	
LNAV MDA	440-1	424 (500-1)	440-1 $\frac{1}{4}$	424 (500-1 $\frac{1}{4}$ )
<b>C</b> CIRCLING	580-1	564 (600-1)	760-2 $\frac{1}{4}$ 744 (800-2 $\frac{1}{4}$ )	760-2 $\frac{1}{2}$ 744 (800-2 $\frac{1}{2}$ )

REIL Rwy 18 and 36  
MIRL Rwy 18-36 0

SE-3, 20 JUN 2019 to 18 JUL 2019

SE-3, 20 JUN 2019 to 18 JUL 2019