

| | | | |
|--|------------------------|---|-------------|
| WAAS CH 78029 W18A | APP CRS 185° | Rwy Idg TDZE 777 Apt Elev 777 | 5264 |
|--|------------------------|---|-------------|

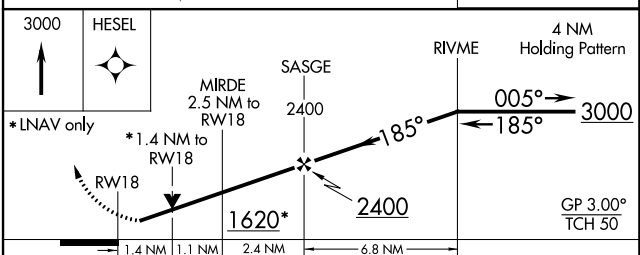
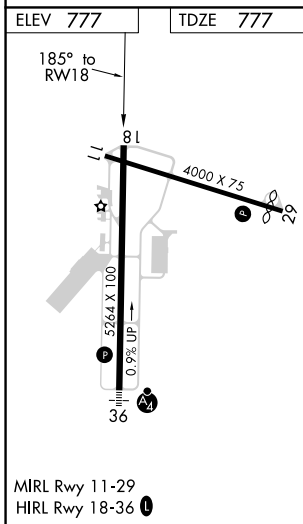
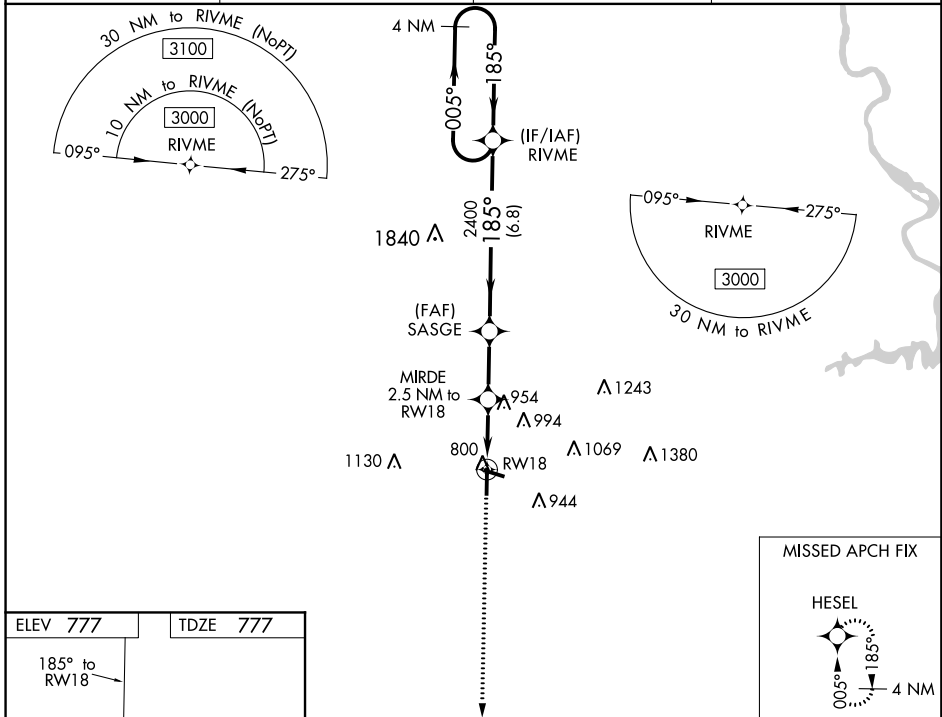
RNAV (GPS) RWY 18

AUBURN UNIVERSITY RGNL (AUO)

⚠ For uncompensated Baro-VNAV systems, LNAV/VNAV NA below -16°C (4°F) or above 54°C (130°F).
⚠ Baro-VNAV and VDP NA when using Columbus altimeter setting. DME/DME RNP-0.3 NA. Rwy 18 helicopter visibility reduction below 3/4 SM not authorized. When local altimeter setting not received, use Columbus altimeter setting: increase LPV DA to 1140 feet and visibility all Cats 1/2 SM; increase LNAV/VNAV DA to 1164 feet and visibility all Cats 3/8 SM; increase all MDA 120 feet and LNAV Cats C/D visibility 3/8 SM, Circling Cat C visibility 1/4 SM, and circling Cat D visibility 1/2 SM.

MISSED APPROACH: Climb to 3000 direct HESEL and hold.

| | | | |
|----------------------------|---|----------------------------------|---------------------------------|
| AWOS-3PT 132.575 | ATLANTA APP CON * 125.5 323.1 | ATLANTA CLNC DEL 118.7 | UNICOM 123.0 (CTAF) 0 |
|----------------------------|---|----------------------------------|---------------------------------|



| CATEGORY | A | B | C | D |
|-------------------|-----------------------|-----------------------|-------------------------------|-------------------------------|
| LPV DA | | 1027-3/4 | 250 (300-3/4) | |
| LNAV/VNAV DA | | 1051-7/8 | 274 (300-7/8) | |
| LNAV MDA | 1260-1 | 483 (500-1) | 1260-1 3/8 | 483 (500-1 3/8) |
| C CIRCLING | 1280-1 503 (600-1) | 1360-1 583 (600-1) | 1380-1 3/4 603 (700-1 3/4) | 1480-2 1/4 703 (800-2 1/4) |

SE-4, 20 JUN 2019 to 18 JUL 2019

SE-4, 20 JUN 2019 to 18 JUL 2019