

WAAS CH 63139 W11A	APP CRS 111°	Rwy ldg TDZE Apt Elev	4000 775 777
--	------------------------	-----------------------------	---

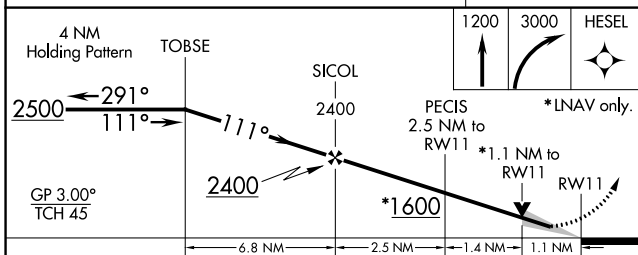
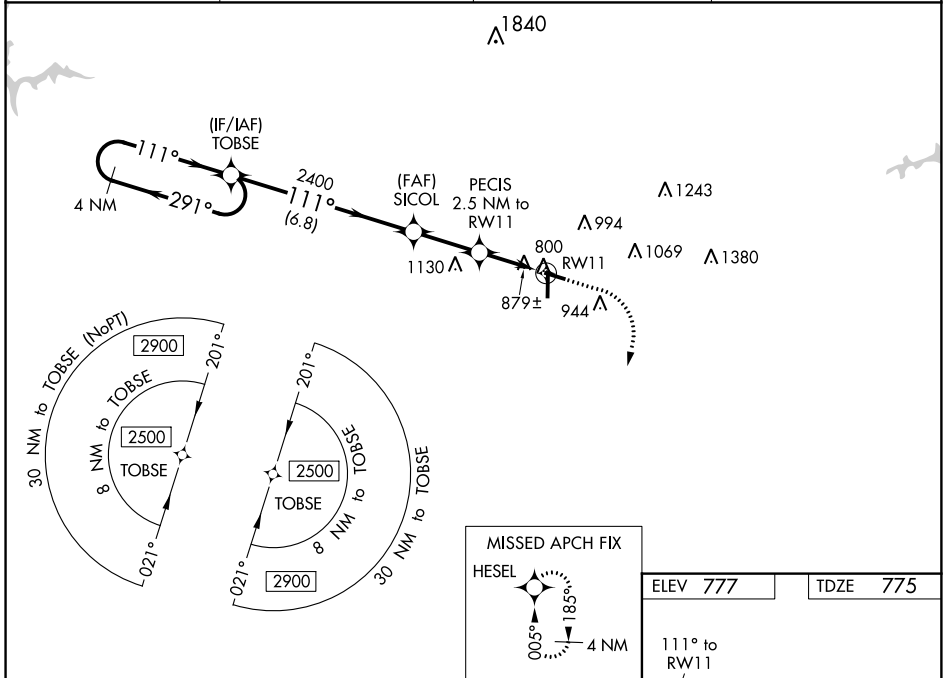
RNAV (GPS) RWY 11

AUBURN UNIVERSITY RGNL (AUO)

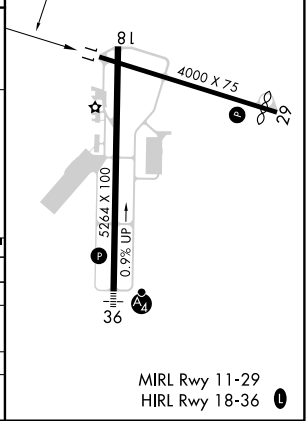
⚠ For uncompensated Baro-VNAV systems, LNAV/VNAV NA below -16°C (4°F) or above 54°C (130°F). Baro-VNAV and VDP NA when using Columbus altimeter setting. DME/DME RNP-0.3 NA. When local altimeter setting not received, use Columbus altimeter setting: increase LPV DA to 1138 feet and visibility all Cats ¼ SM; increase LNAV/VNAV DA to 1173 feet and visibility all Cats ⅓ SM; increase all MDA 120 feet and LNAV Cats C/D and Circling Cat C visibility ¼ SM and Circling Cat D visibility ½ SM.

⚠ MISSED APPROACH: Climb to 1200 then climbing right turn to 3000 direct HESEL and hold.

AWOS-3PT 132.575	ATLANTA APP CON * 125.5 323.1	ATLANTA CLNC DEL 118.7	UNICOM 123.0 (CTAF) 0
----------------------------	---	----------------------------------	---------------------------------



CATEGORY				
LPV DA	1025-1 250 (300-1)			
LNAV/VNAV DA	1060-1 285 (300-1)			
LNAV MDA	1160-1	385 (400-1)	1160-1½	385 (400-1½)
CIRCLING	1280-1 503 (600-1)	1360-1 583 (600-1)	1380-1¾ 603 (700-1¾)	1480-2¼ 703 (800-2¼)



MIRL Rwy 11-29
HIRL Rwy 18-36 0

SE-4, 20 JUN 2019 to 18 JUL 2019

SE-4, 20 JUN 2019 to 18 JUL 2019