

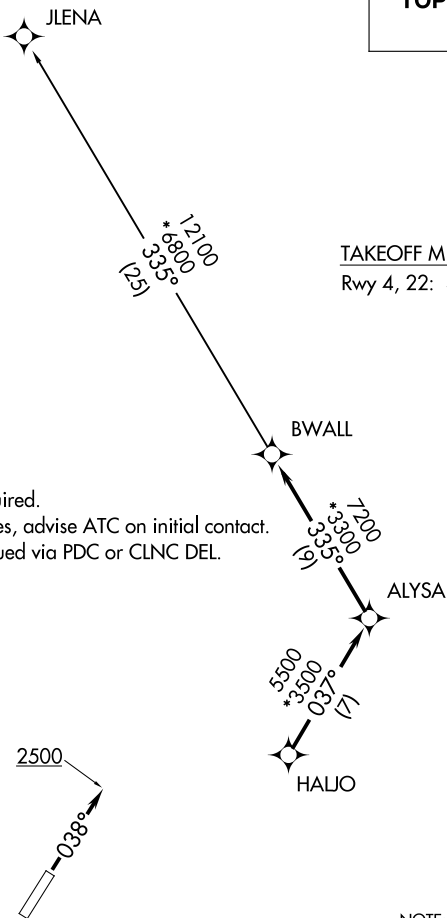
BWALL TWO DEPARTURE (RNAV)

ATIS
134.25
GND CON
121.9
GREER TOWER*
120.1 251.15
UNICOM
122.95
GREER DEP CON*
119.4 350.2

**TOP ALTITUDE:
5000**

TAKEOFF MINIMUMS
Rwy 4, 22: Standard.

- NOTE: For turbojets only.
- NOTE: RNAV 1.
- NOTE: RADAR required.
- NOTE: DME/DME/IRU or GPS required.
- NOTE: If unable to accept climb rates, advise ATC on initial contact.
- NOTE: Transponder code will be issued via PDC or CLNC DEL.



SE-2, 20 JUN 2019 to 18 JUL 2019

SE-2, 20 JUN 2019 to 18 JUL 2019

DEPARTURE ROUTE DESCRIPTION

TAKEOFF ALL RUNWAYS: Climb on assigned heading for RADAR vectors to HALJO, then on depicted route to BWALL, thence. . . .

. . . .on JLENA transition. Maintain 5000. Expect clearance to filed altitude within 10 minutes after departure.

TAKEOFF RUNWAY 4: Climb heading 038° to 2500 before turning left.

JLENA TRANSITION (BWALL2.JLENA)