

NORTH, SOUTH CAROLINA

RNAV (GPS) RWY 24

APCH CRS 241°	Rwy ldg 8999
	THRE 311
	Arpt Elev 321

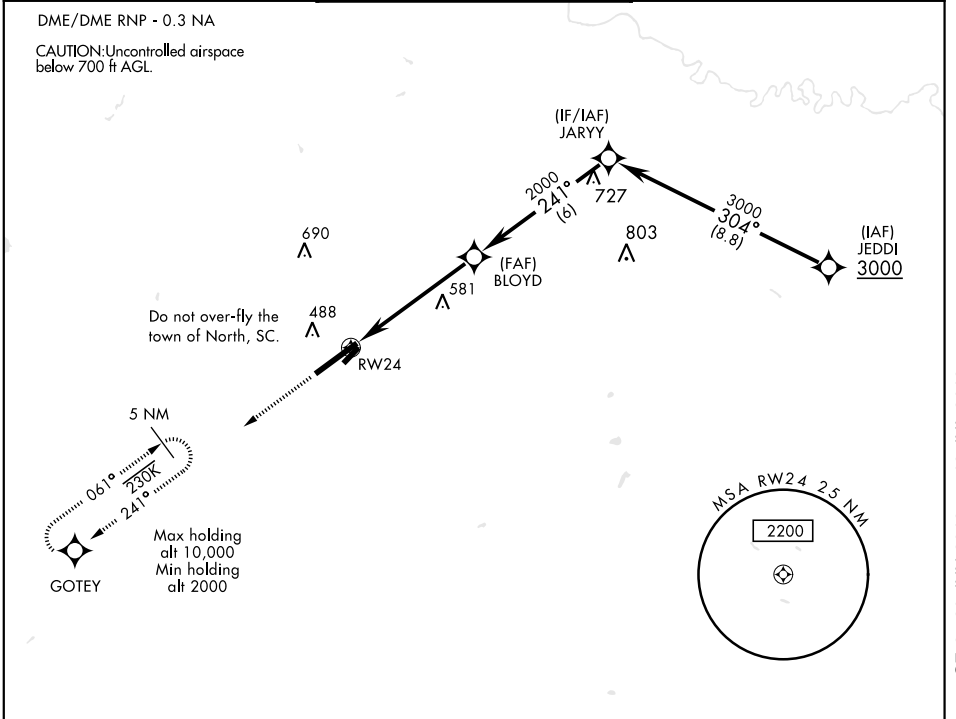
AL-3017 [USAF]

NORTH AF AUX (KXNO)

▼ * Circling to Rwy 5-23 not authorized.

MISSED APPROACH: Climb to 2000 direct GOTIEY and hold.

ASOS (KGOB) 118.525	LZ/DZ OPS FACILITY 120.475 235.775	COLUMBIA APP CON 124.15 338.2
-------------------------------	--	---

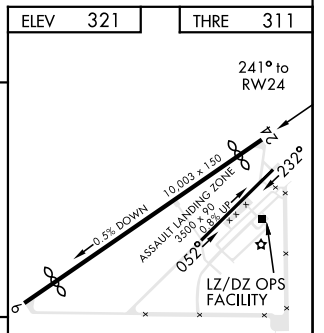
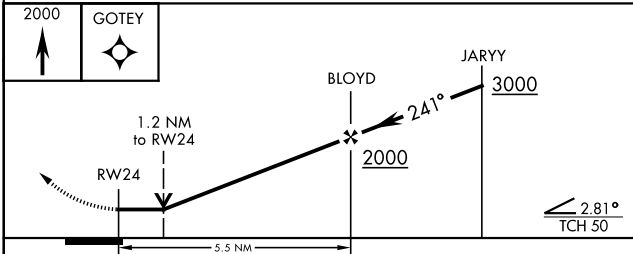


SE-2, 20 JUN 2019 to 18 JUL 2019

SE-2, 20 JUN 2019 to 18 JUL 2019

EMERG SAFE ALT 100 NM 4200

ELEV 321	THRE 311
----------	----------



CATEGORY	A	B	C	D	E
LNAV MDA	760-1	449 (500-1)	760-1 3/8	449 (500-1 3/8)	
CIRCLING*	900-1	579 (600-1)	900-1 1/2 579 (600-1 1/2)	1400-3	1079 (1100-3)

Rwy 6 ldg 9003'
Rwy 24 ldg 8999'
HIRL Rwy 06-24

NORTH, SOUTH CAROLINA

33°37'N-81°05'W

NORTH AF AUX (KXNO)

Orig 30MAR17

RNAV (GPS) RWY 24