


VOR/DME ATR	APP CRS	Rwy Idg	5130
112.6	053°	TDZE	51
Chan 73		Apt Elev	53

# VOR RWY 4

DELAWARE COASTAL (GED)

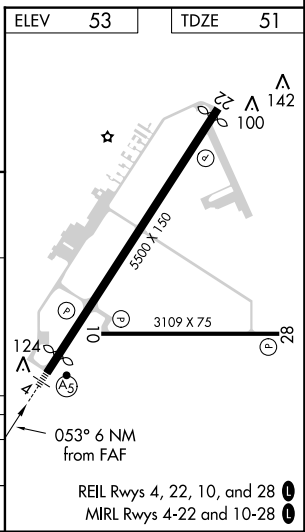
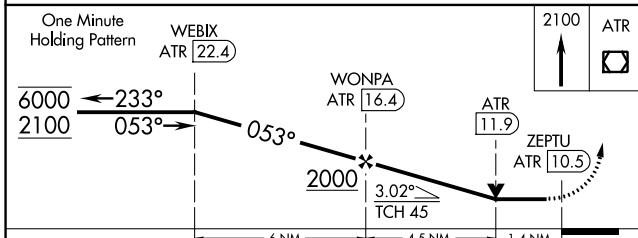
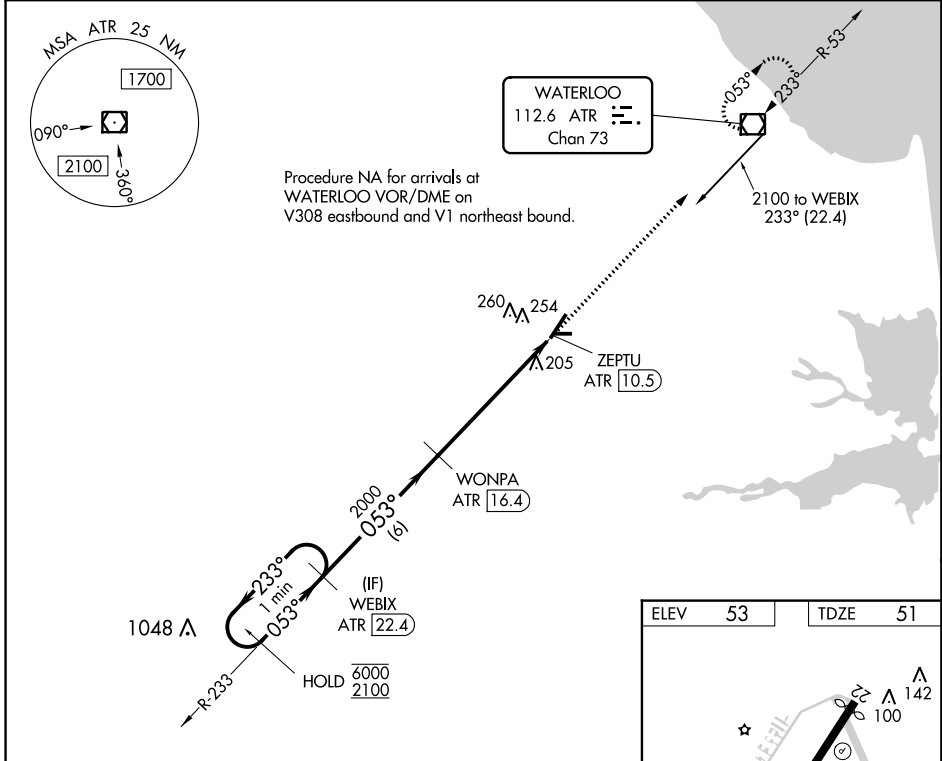
**DME required.**

▼ Rwy 4 helicopter visibility reduction below 3/4 SM NA. For inop ALS, increase Cat A/B visibility to 1 SM, and Cat C/D to 1 3/8 SM. When local altimeter setting not received, use Salisbury altimeter setting increase all MDA 60 feet; increase S-4 Cats C/D visibility 1/8 mile, and Cat C Circling visibility 3/8 SM. For inop ALS when using Salisbury altimeter setting, increase Cat A/B visibility to 1 SM.

MALSR 

MISSED APPROACH: Climb to 2100 direct ATR VOR/DME and hold.

ASOS 118.375	DOVER APP CON 132.425 257.875	CLNC DEL 125.55	UNICOM 123.0 (CTAF) <b>1</b>
-----------------	----------------------------------	--------------------	---------------------------------



CATEGORY	A	B	C	D
S-04	540-3/4 489 (500-3/4)		540-1 489 (500-1)	
<b>C</b> CIRCLING	560-1 507 (600-1)	580-1 527 (600-1)	580-1 1/2 527 (600-1 1/2)	620-2 567 (600-2)

NE-3, 20 JUN 2019 to 18 JUL 2019

NE-3, 20 JUN 2019 to 18 JUL 2019