

WAAS CH 45923 W18A	APP CRS 185°	Rwy Idg 5956 TDZE 49 Apt Elev 55
--	------------------------	---

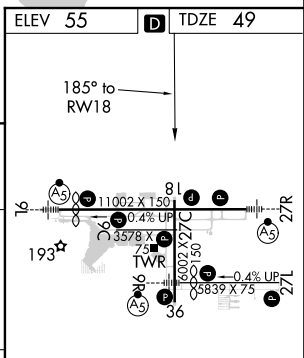
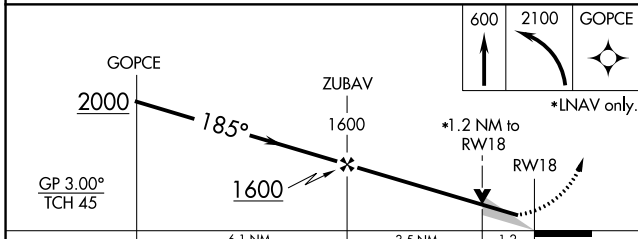
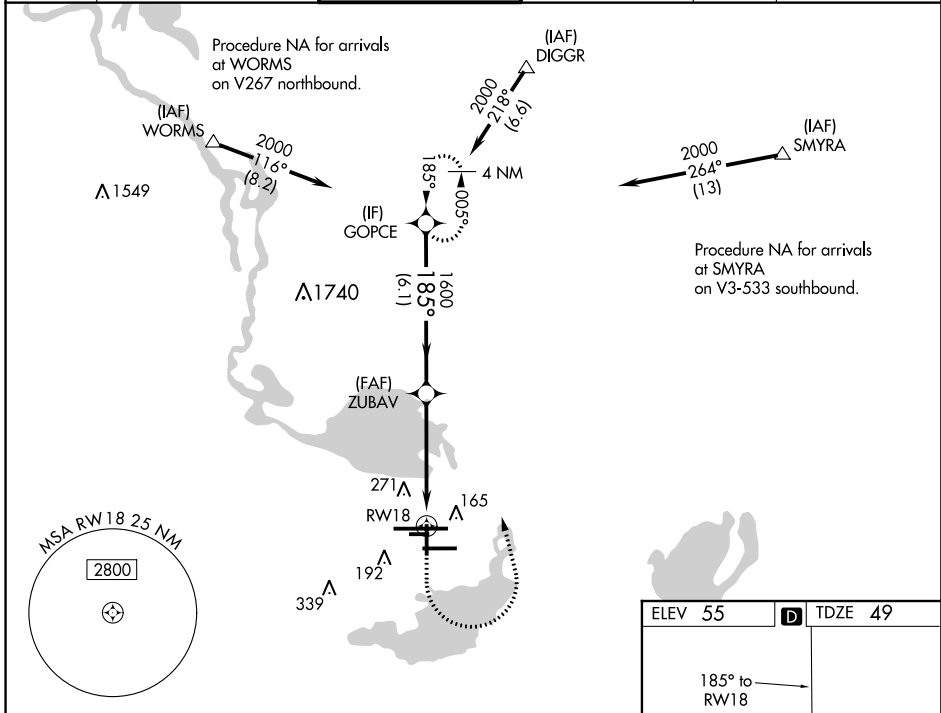
RNAV (GPS) RWY 18

ORLANDO SANFORD INTL (SFB)

⚠ Night Landing: Rwy 27C NA. Baro-VNAV NA when using Executive altimeter setting. For uncompensated Baro-VNAV systems. LNAV/VNAV NA below -15°C (5°F) or above 43°C (109°F). DME/DME RNP-0.3 NA. VDP NA with Executive altimeter setting.
⚠ When local altimeter setting not received, use Executive altimeter setting and increase all DA 43 feet and all MDA 60 feet, increase LNAV/VNAV all Cats visibility ¼ mile, and LNAV Cat C and D visibility ½ mile.

MISSED APPROACH:
 Climb to 600 then climbing left turn to 2100 direct GOPCE and hold.

ATIS 125.975	ORLANDO APP CON 135.3 351.9 (NORTH) 119.775 351.9 (SOUTH)	SANFORD TOWER* 120.3(CTAF) 0 254.35	GND CON 121.35 254.35	CLNC DEL 123.975	ORLANDO CLNC DEL 121.35 (when twr closed)
------------------------	---	---	---------------------------------	----------------------------	--



CATEGORY	A	B	C	D
LPV DA		249-¾	200 (200-¾)	
LNAV/VNAV DA		299-¾	250 (300-¾)	
LNAV MDA	480-1	431 (500-1)	480-1¼	431 (500-1¼)
CIRCLING	580-1	525 (600-1)	525 (600-1½)	620-2 565 (600-2)

MIRL Rwy 18-36
 MIRL Rwys 9C-27C
 HIRL Rwy 9L-27R and 9R-27L
 REIL Rwys 9C, 18, 27L and 36

SE-3, 20 JUN 2019 to 18 JUL 2019

SE-3, 20 JUN 2019 to 18 JUL 2019