

# FUNNL THREE DEPARTURE (RNAV)

SC-1, 20 JUN 2019 to 18 JUL 2019

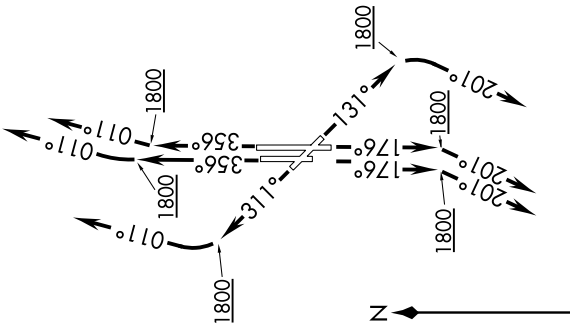
**TOP ALTITUDE:**  
Assigned by ATC

ATIS  
128.725  
GND.CON  
121.7  
WILEY POST TOWER \*  
126.9 306.9  
OKE CITY DEP CON  
124.6 266.8 (South)  
124.2 336.4 (North)

**TAKEOFF MINIMUMS:**

Rwys 13, 17L/R, 31, 35L/R:

Standard with minimum climb of 500' per NM to 2100.



NOTE: RADAR required.  
NOTE: DME/DME/IRU or GPS required.  
NOTE: RNAV 1.

# FUNNL THREE DEPARTURE (RNAV)

## DEPARTURE ROUTE DESCRIPTION

**TAKEOFF RWY 13:** Climb heading 131° to 1800, then right turn heading 201° or as assigned by ATC, expect RADAR vectors to VOWED. Thence. . . .

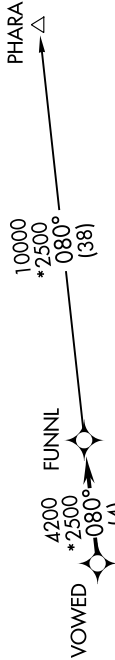
**TAKEOFF RWYS 17L/R:** Climb heading 176° to 1800, then right turn heading 201° or as assigned by ATC, expect RADAR vectors to VOWED. Thence. . . .

**TAKEOFF RWY 31:** Climb heading 311° to 1800, then right turn heading 011° or as assigned by ATC, expect RADAR vectors to VOWED. Thence. . . .

**TAKEOFF RWY 35L:** Climb heading 356° to 1800, then heading 011° or as assigned by ATC, expect RADAR vectors to VOWED. Thence. . . .

**TAKEOFF RWY 35R:** Climb heading 356° to 1800, then right turn heading 011° or as assigned by ATC, expect RADAR vectors to VOWED. Thence. . . .

. . . . on track 080° to FUNNL, then on (transition). Maintain 3000 or as assigned by ATC. Expect filed altitude 10 minutes after departure.



PHARA TRANSITION (FUNNL3.PHARA):

NOTE: Chart not to scale.

SC-1, 20 JUN 2019 to 18 JUL 2019