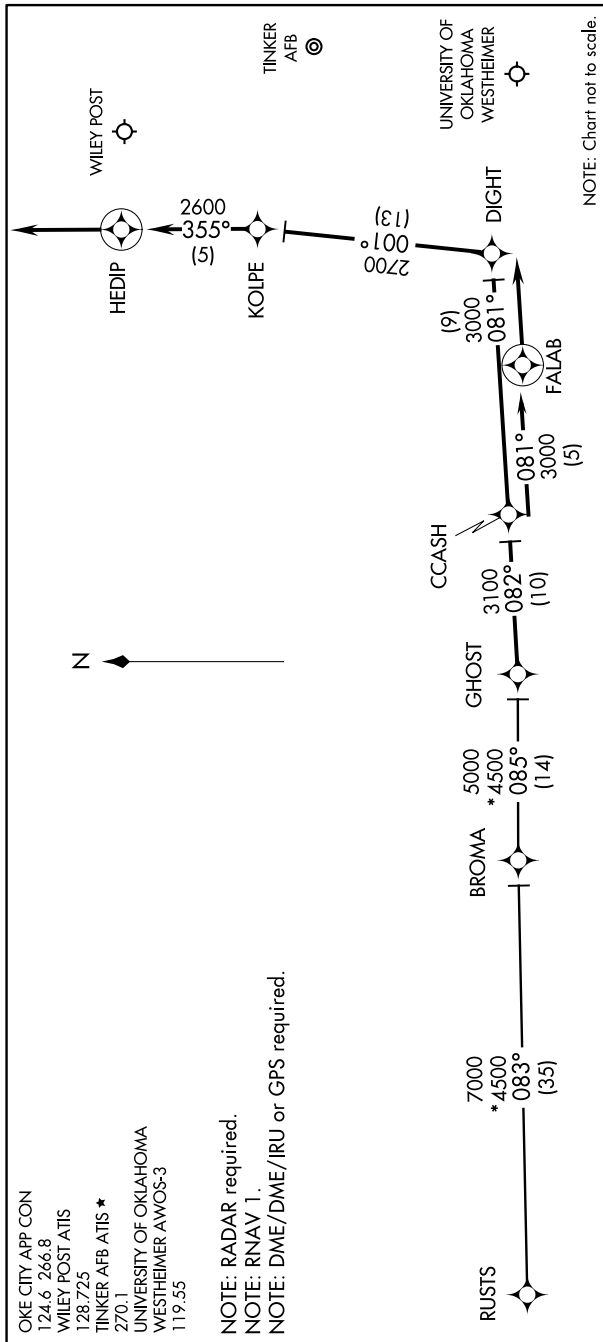


(GHOST.CCASH1) 17117
CCASH ONE ARRIVAL (RNAV)

AL-739 (FAA)

OKLAHOMA CITY, OKLAHOMA

SC-1, 20 JUN 2019 to 18 JUL 2019



ARRIVAL ROUTE DESCRIPTION

BROMA TRANSITION (BROMA.CCASH1):
RUSTS TRANSITION (RUSTS.CCASH1):

From GHOST on track 082° to CCASH.

LANDING OUN/TIK: From CCASH on track 081° to FALAB, then on track 081°. Expect radar vectors to final approach course.

LANDING PWA RW17L: From CCASH on track 081° to DIGHT, then on track 001° to KOLPE, then on track 355° to HEDIP, then on track 355°. Expect radar vectors to final approach course.

LANDING PWA RW35R: From CCASH on track 081° to FALAB, then on track 081°. Expect radar vectors to final approach course.

CCASH ONE ARRIVAL (RNAV)
 (GHOST.CCASH1) 24JUL14

OKLAHOMA CITY, OKLAHOMA

SC-1, 20 JUN 2019 to 18 JUL 2019