

LOC/DME I-HPN 109.7 Chan 34	APP CRS 163°	Rwy Idg 6549 TDZE 439 Apt Elev 439
---	------------------------	---

ILS or LOC RWY 16

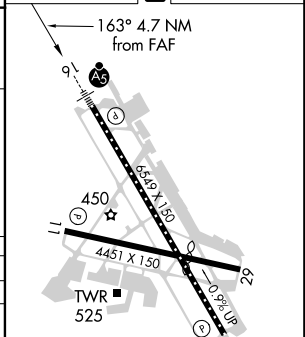
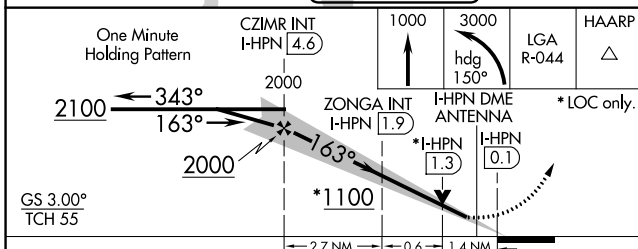
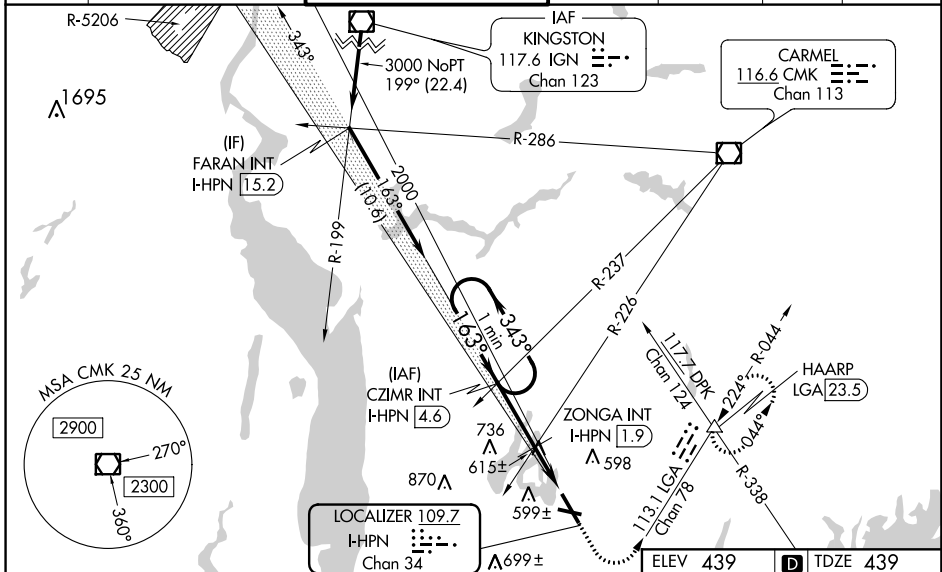
WESTCHESTER COUNTY (HPN)

⚠ Circling Rwy 11, 29 NA at night.
For inop ALS, increase S-LOC 16
Cats C/D visibility to 1½ SM and
ZONGA FIX minimums S-LOC 16
Cats C/D visibility to 1¾ SM.

MALSRL

MISSED APPROACH: Climb to 1000
then climbing left turn to 3000 on heading
150° and LGA VOR/DME R-044 to
HAARP INT/LGA 23.5 DME and hold,
continue climb-in-hold to 3000.

D-ATIS 133.8	NEW YORK APP CON 120.8 126.4 257.65	WESTCHESTER TOWER ★ 118.575 (CTAF) 0 284.65	GND CON 121.825	CLNC DEL 127.25	CPDLC	UNICOM 122.95
------------------------	---	---	---------------------------	---------------------------	-------	-------------------------



CATEGORY	A	B	C	D
S-ILS 16	639/18 200 (200-½)			
S-LOC 16	1100/24	661 (700-½)	1100-1½	661 (700-½)
C CIRCLING	1100-1	661 (700-1)	1100-1¾ 661 (700-1¾)	1200-2½ 761 (800-2½)
ZONGA FIX MINIMUMS (DUAL VOR RECEIVERS OR DME REQUIRED)				
S-LOC 16	940/24	501 (600-½)	940/55	501 (600-1)
C CIRCLING	980-1	541 (600-1)	1080-1¾ 641 (700-¾)	1200-2½ 761 (800-2½)

REIL Rws 11 and 34 **Ⓛ**
HIRL Rwy 16-34 **Ⓛ**
MIRL Rwy 11-29 **Ⓛ**
TDZ/CL Rwy 16 **Ⓛ**

FAF to MAP 4.7 NM

Knots	60	90	120	150	180
Min:Sec	4:42	3:08	2:21	1:53	1:34

NE-2, 20 JUN 2019 to 18 JUL 2019

NE-2, 20 JUN 2019 to 18 JUL 2019