

WAAS CH <b>77912</b> <b>W31A</b>	APP CRS <b>311°</b>	Rwy Idg <b>6724</b> TDZE <b>226</b> Apt Elev <b>240</b>
--	------------------------	---

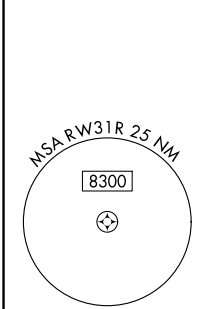
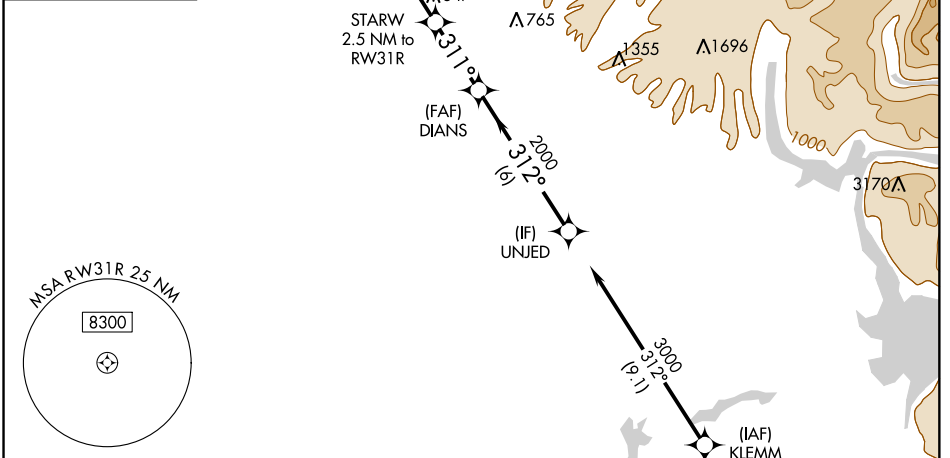
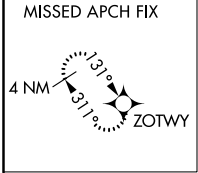
# RNAV (GPS) RWY 31R

CHICO MUNI (CIC)

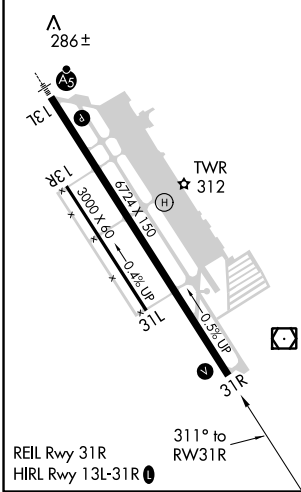
▼ For uncompensated Baro-VNAV systems, LNAV/VNAV NA below -15°C (5°F) or above 48°C (118°F).  
DME/DME RNP-0.3 NA. Circling NA east of Rwy 13L/31R.

MISSED APPROACH: Climb to 3000 direct ZOTWY and hold.

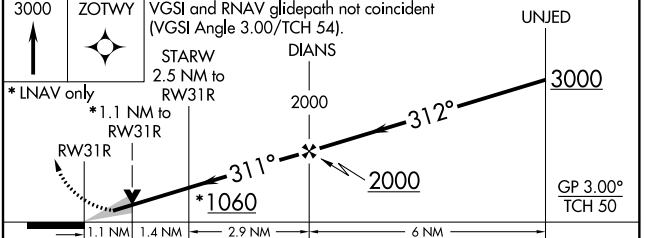
ATIS <b>119.675</b>	OAKLAND CENTER <b>132.2 350.3</b>	CHICO TOWER ★ <b>121.0 (CTAF) 239.3</b>	GND CON <b>121.9</b>	UNICOM <b>122.95</b>
------------------------	--------------------------------------	--	-------------------------	-------------------------



ELEV 240	<b>D</b>	TDZE 226
----------	----------	----------



Procedure NA for arrivals at GRIDD on V23 and T261 southeast bound.



CATEGORY	A	B	C	D
LPV DA	476-1 250 (300-1)			
LNAV/VNAV DA	733-1¾ 507 (500-1¾)			
LNAV MDA	600-1 374 (400-1)			600-1¼ 374 (400-1¼)
CIRCLING	640-1 400 (400-1)	700-1 460 (500-1)	700-1½ 460 (500-1½)	800-2 560 (600-2)

SW-2, 20 JUN 2019 to 18 JUL 2019

SW-2, 20 JUN 2019 to 18 JUL 2019