

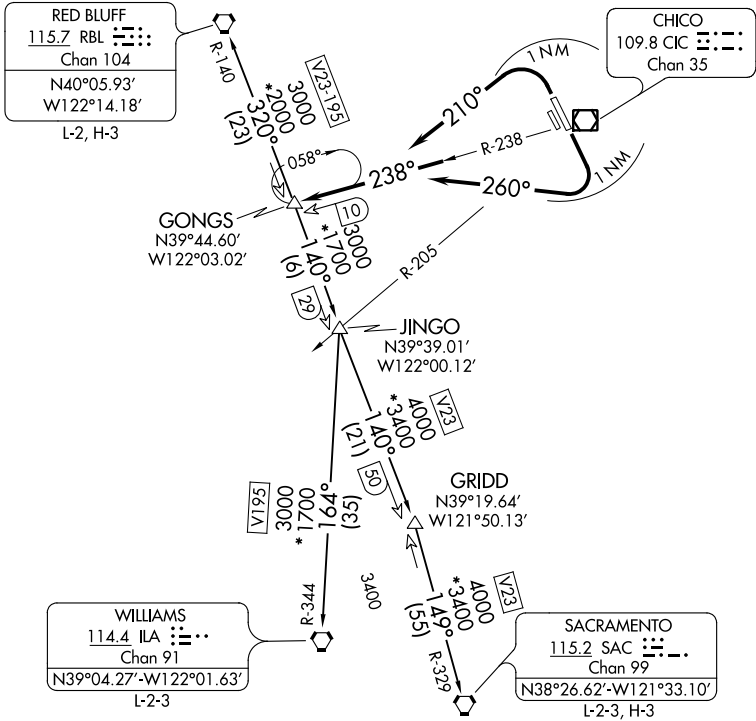
GONGS THREE DEPARTURE

AL-557 (FAA)

CHICO MUNI (CIC)
CHICO, CALIFORNIA

ATIS
119.675
OAKLAND CENTER
132.2
CHICO TOWER*
121.0 (CTAF)
GND CON
121.9

**TOP ALTITUDE:
ASSIGNED BY ATC.**



SW-2, 20 JUN 2019 to 18 JUL 2019

SW-2, 20 JUN 2019 to 18 JUL 2019

NOTE: DME required for SACRAMENTO TRANSITION.

TAKEOFF MINIMUMS

Rwy 13L/R, 31L/R: Standard with minimum climb of 400' per NM to 700.

NOTE: Chart not to scale.

DEPARTURE ROUTE DESCRIPTION

TAKEOFF RUNWAYS 13L/R: Turn right heading 260° within 1 NM of DER. Intercept CIC R-238 to GONGS INT. Thence. . .

TAKEOFF RUNWAYS 31L/R: Turn left heading 210° within 1 NM of DER. Intercept CIC R-238 to GONGS INT. Thence. . .

. . . on transition or assigned route. Maintain ATC assigned altitude.

RED BLUFF TRANSITION (GONGS3.RBL): From over GONGS INT on RBL R-140 to RBL VORTAC.

SACRAMENTO TRANSITION (GONGS3.SAC): From over GONGS INT on RBL R-140 and SAC R-329 to SAC VORTAC.

WILLIAMS TRANSITION (GONGS3.ILA): From over GONGS INT on RBL R-140 and ILA R-344 to ILA VORTAC.

GONGS THREE DEPARTURE