

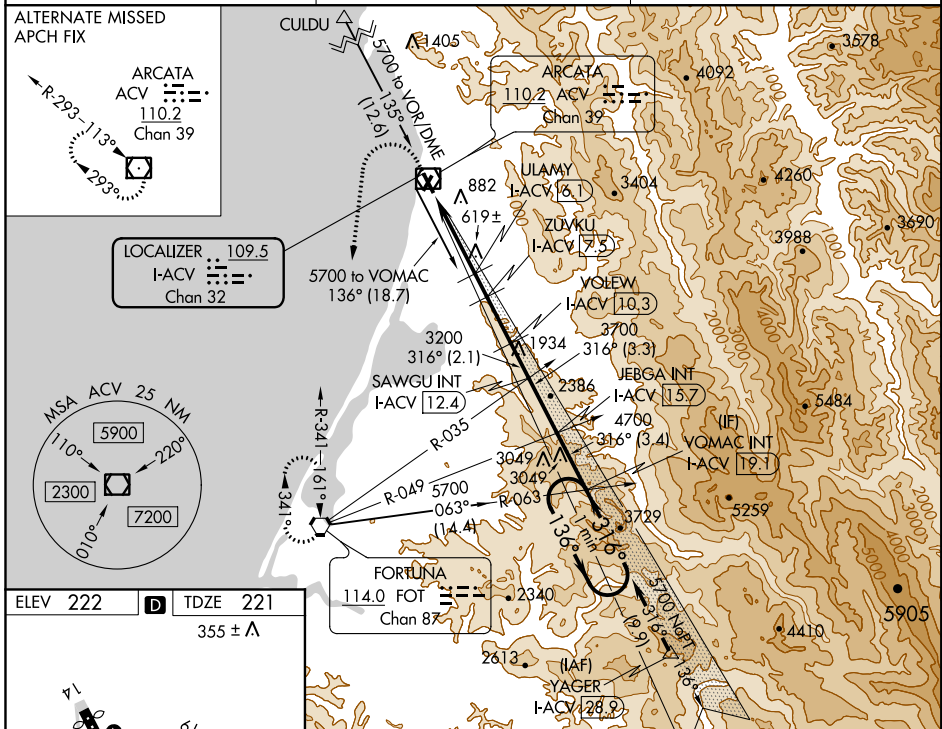
LOC/DME I-ACV 109.5 Chan 32	APP CRS 316°	Rwy Idg TDZE Apt Elev	5846 221 222
---	------------------------	-----------------------------	---

ILS or LOC RWY 32

CALIFORNIA REDWOOD COAST-HUMBOLDT COUNTY (ACV)

<p>NA</p> <p>Circling NA northeast of Rwy 14-32. DME required.</p>	<p>MALS R</p>	<p>MISSED APPROACH: Climb to 800 then climbing left turn to 3000 direct FOT VORTAC and hold.</p>
---	---------------	--

ASOS 118.525	SEATTLE CENTER 124.85 306.3	UNICOM 123.0 (CTAF) 0
------------------------	---------------------------------------	---------------------------------



ELEV 222 TDZE 221
355 ± A

TDZ/CL Rwy 32
MIRL Rwy 1-19
HIRL Rwy 14-32
REIL Rwy 14
REIL Rwy 1

800 3000 FOT Use I-ACV DME when on the localizer course.

ULAMY I-ACV (6.1)	ZUVKU I-ACV (7.5)	VOLEW I-ACV (10.3)	SAWGU I-ACV (12.4)	JEBGA I-ACV (15.7)	VOMAC I-ACV (19.1)
-------------------	-------------------	--------------------	--------------------	--------------------	--------------------

316° 136° 5700

3200 4700 3700

1860* 320* 3200

VGSI and ILS glidepath not coincident (VGS Angle 3.00/TCH 43).

CATEGORY	A	B	C	D
S-ILS 32	441/18		220 (300-1/2)	
S-LOC 32	880/24	659 (700-1/2)	880-1 3/8	659 (700-1 3/8)
C CIRCLING	880-1	658 (700-1)	880-1 7/8	880-2
			658 (700-1 7/8)	658 (700-2)

SW-2, 20 JUN 2019 to 18 JUL 2019

SW-2, 20 JUN 2019 to 18 JUL 2019