

EDWARDS, CALIFORNIA

# ILS or LOC/DME RWY 22L

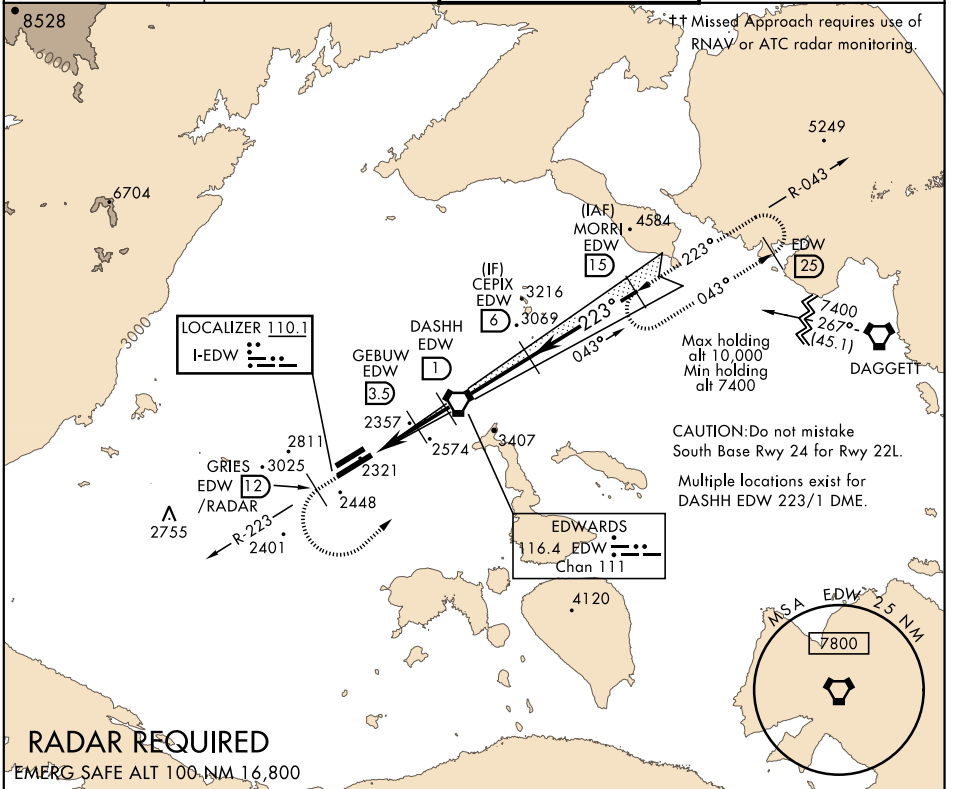
LOC I-EDW <b>110.1</b>	APCH CRS <b>223°</b>	Rwy Idg <b>15,024</b> TDZE <b>2286</b> Arpt Elev <b>2311</b>
---------------------------	-------------------------	--

AL-500 [USAF]

EDWARDS AFB (KEDW)

<p>▼ * Circling not authorized NW of Rwy 4L-22R. Circling not authorized at night to Rwy 4L-22R.</p>	<p>†† MISSED APPROACH: Climb to 7400. Track EDW R-223 outbound to GRIES, then turn left direct MORRI and hold.</p>
--	--

<p>ATIS ★ <b>149.875 269.9</b></p>	<p>SPORT APP CON <b>132.75 343.7</b></p>	<p>EDWARDS TOWER ★ <b>120.7 318.1</b></p>	<p>GND CON <b>121.8 225.4</b></p>
--	--	---	---------------------------------------

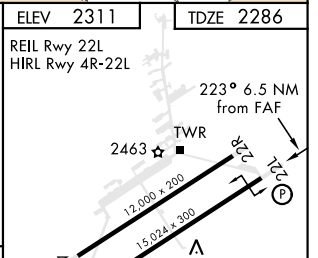
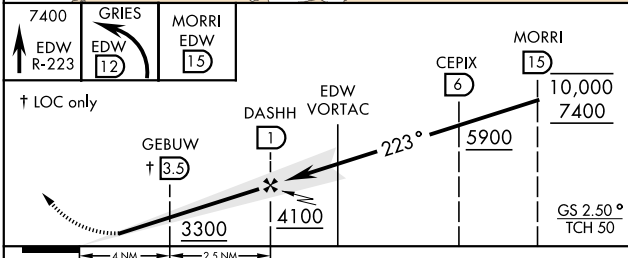


SW-3, 20 JUN 2019 to 18 JUL 2019

SW-3, 20 JUN 2019 to 18 JUL 2019

## RADAR REQUIRED

EMERG SAFE ALT 100-NM 16,800



CATEGORY	A	B	C	D	E
S-ILS 22L		2486-3/4	200	(200-3/4)	
S-LOC 22L		2540-1	254	(300-1)	
CIRCLING *	2880-1 569 (600-1)	2880-1 1/2 569 (600-1 1/2)	2880-2 569 (600-2)		

ELEV 2311	TDZE 2286
REIL Rwy 22L	HIRL Rwy 4R-22L
FAF to MAP 6.5 NM	
Knots	60 90 120 150 180
Min:Sec	6:30 4:20 3:15 2:36 2:10

EDWARDS, CALIFORNIA  
Amdt 4 25APR19

34°55'N-117°53'W

EDWARDS AFB (KEDW)

# ILS or LOC/DME RWY 22L