

TUCSON, ARIZONA

ILS or LOC Y RWY 12

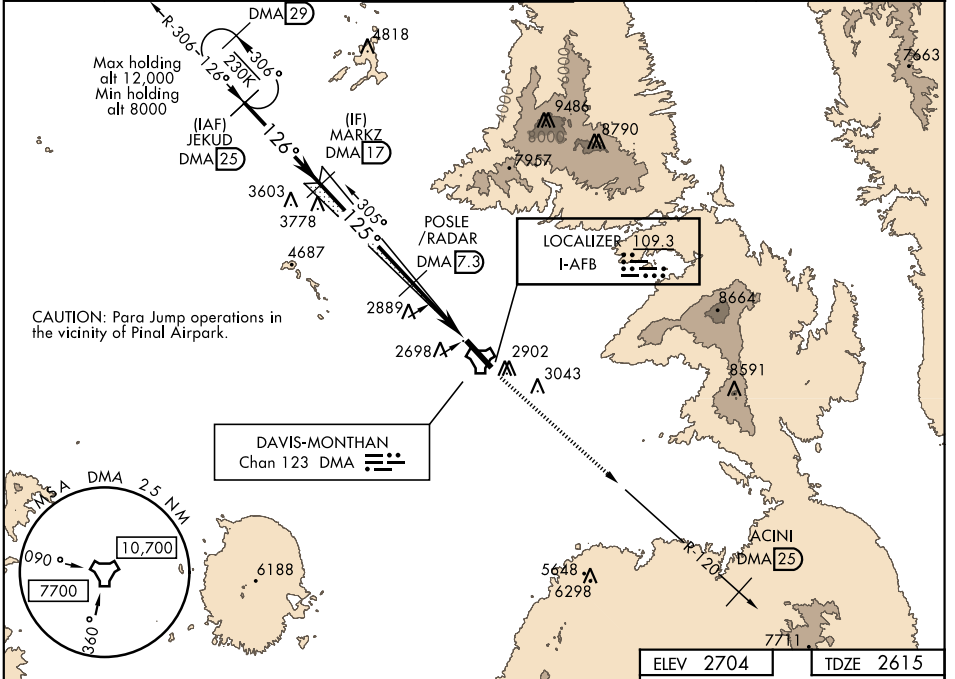
LOC I- AFB 109.3	APCH CRS 125°	Rwy Idg 13,643 TDZE 2615 Arprt Elev 2704
-----------------------------------	-------------------------	---

AL-429 [USAF]

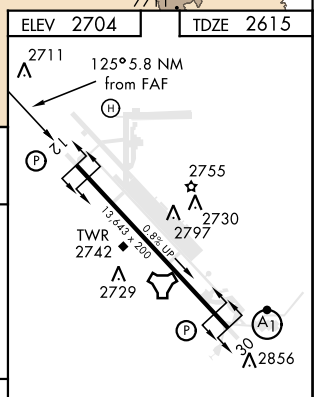
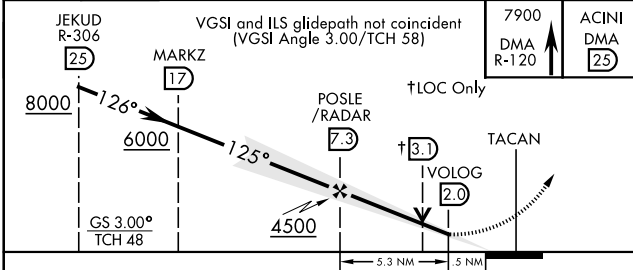
DAVIS-MONTHAN AFB (KDMA)

* Circling not authorized S of Rwy 12-30.		MISSED APPROACH: Climbing to 7900 intercept DMA TACAN R-120 to ACINI. Expect RADAR vectors.		
---	--	---	--	--

ATIS★ 270.1	TUCSON APP CON 066°-274° 119.4 318.1 275°-065° 125.1 269.55	DAVIS-MONTHAN TOWER 118.85 253.5	GND CON 121.8 275.8	CLNC DEL 121.8 275.8
-----------------------	---	--	-------------------------------	--------------------------------



RADAR or DME REQUIRED
EMERG SAFE ALT 100-NM 17,200



CATEGORY	A	B	C	D	E
S-ILS 12	2865/40 250 (200-¾)				
S-LOC 12	3160/55	545 (500-1)	3160-1½ 545 (500-1½)		
*CIRCLING	3220-1	3240-1	3320-1¾	3360-2	3440-2½
	516 (600-1)	536 (600-1)	616 (700-1¾)	656 (700-2)	736(800-2½)

REIL Rwy 12	FAF to MAP 5.3 NM				
HIRL Rwy 12-30	Knots 60 90 120 150 180				
	Min:Sec	5:18	3:32	2:39	2:07 1:46

TUCSON, ARIZONA 32°10'N-110°53'W DAVIS-MONTHAN AFB (KDMA)

Amtd 1 28MAR19

ILS or LOC Y RWY 12

SW-4, 20 JUN 2019 to 18 JUL 2019

SW-4, 20 JUN 2019 to 18 JUL 2019