

# HI-TACAN Z RWY 30

TACAN DMA Chan <b>123</b>	APCH CRS <b>299°</b>	Rwy ldg <b>13,643</b> TDZE <b>2704</b> Arprt Elev <b>2704</b>
------------------------------	-------------------------	---

JAL-429 [USAF]

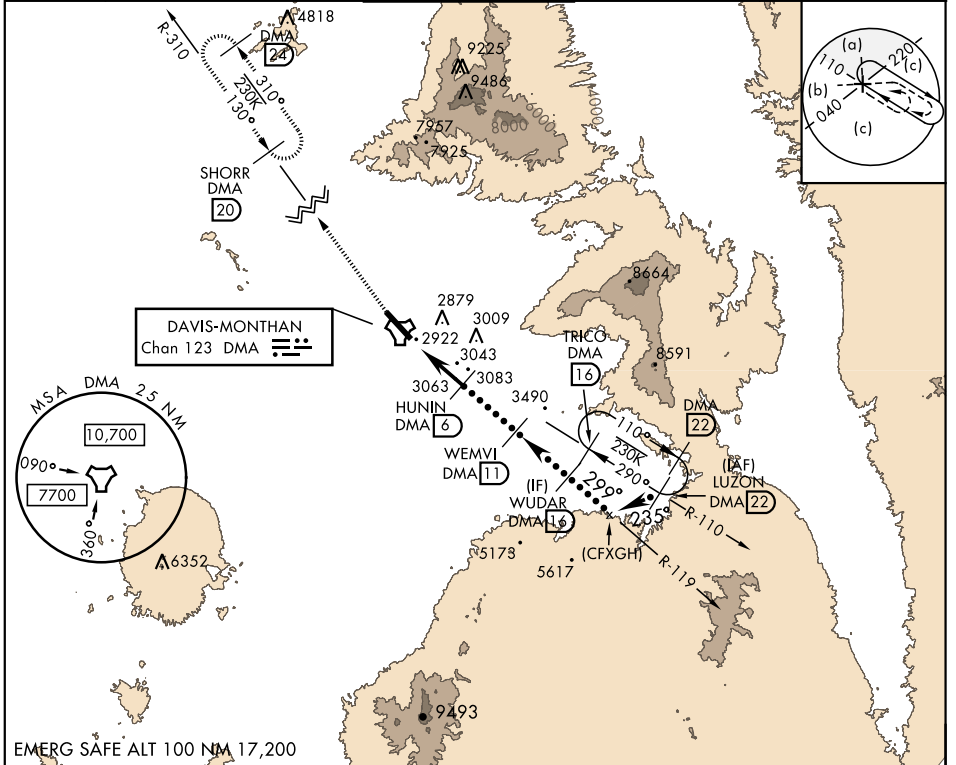
DAVIS-MONTHAN AFB (KDMA)

▼ \* When ALS inop, increase vis to 1½ miles.  
\*\* Circling not authorized S of Rwy 12-30.



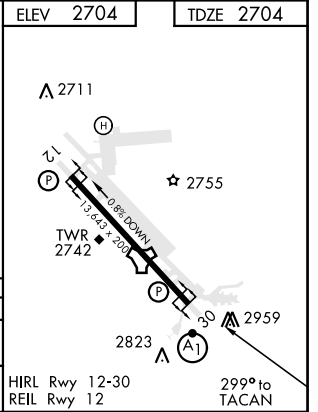
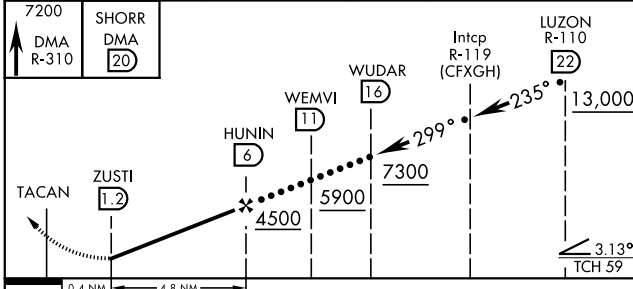
MISSED APPROACH: Climb to 7200, intercept DMA TACAN R-310 to SHORR and hold.

ATIS ★ <b>270.1</b>	TUCSON APP CON 066°-274° <b>119.4 318.1</b> 275°-065° <b>125.1 269.55</b>	DAVIS-MONTHAN TOWER <b>118.85 253.5</b>	GND CON <b>121.8 275.8</b>	CLINC DEL <b>121.8 275.8</b>
------------------------	---	--	-------------------------------	---------------------------------



SW-4, 20 JUN 2019 to 18 JUL 2019

SW-4, 20 JUN 2019 to 18 JUL 2019



CATEGORY	C	D	E
S-30 *	3340-1¾	636 (700-1¾)	
CIRCLING **	3340-1¾ 636 (700-1¾)	3360-2 656 (700-2)	3440-2½ 736 (800-2½)

# HI-TACAN Z RWY 30