

HI-ILS or LOC Z RWY 12

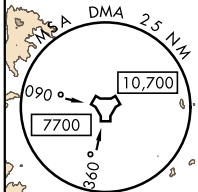
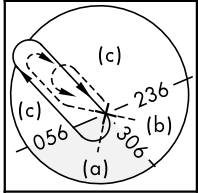
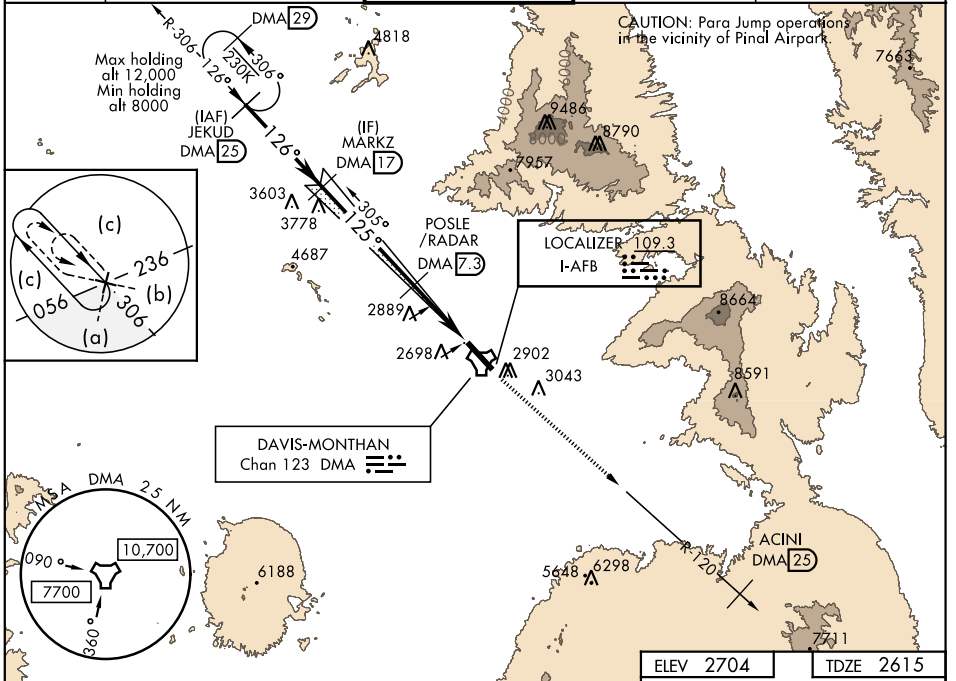
LOC I- AFB 109.3	APCH CRS 125°	Rwy Idg 13,643 TDZE 2615 Arprt Elev 2704
-----------------------------------	-------------------------	---

JAL-429 [USAF]

DAVIS-MONTHAN AFB (KDMA)

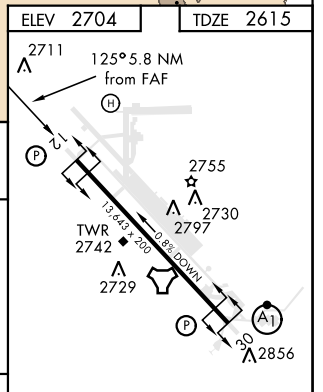
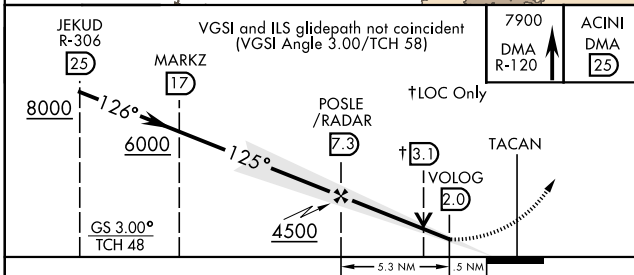
* Circling not authorized S of Rwy 12-30.		MISSED APPROACH: Climbing to 7900 intercept DMA TACAN R-120 to ACINI. Expect RADAR vectors.		
---	--	---	--	--

ATIS★ 270.1	TUCSON APP CON 066°-274° 119.4 318.1 275°-065° 125.1 269.55	DAVIS-MONTHAN TOWER 118.85 253.5	GND CON 121.8 275.8	CLNC DEL 121.8 275.8
-----------------------	---	--	-------------------------------	--------------------------------



RADAR or DME REQUIRED

EMERG SAFE ALT 100-NM 17,200



CATEGORY	C	D	E
S-ILS 12		2865/40 250 (200-¾)	
S-LOC 12		3160-1½ 545 (500-1½)	
CIRCLING*	3320-1¾ 616 (700-1¾)	3360-2 656 (700-2)	3440-2½ 736 (800-2½)

REIL Rwy 12	
HIRL Rwy 12-30	
FAF to MAP 5.3 NM	
Knots	120 140 160 180 200
Min:Sec	2:39 2:16 1:59 1:46 1:35

HI-ILS or LOC Z RWY 12

SW-4, 20 JUN 2019 to 18 JUL 2019

SW-4, 20 JUN 2019 to 18 JUL 2019