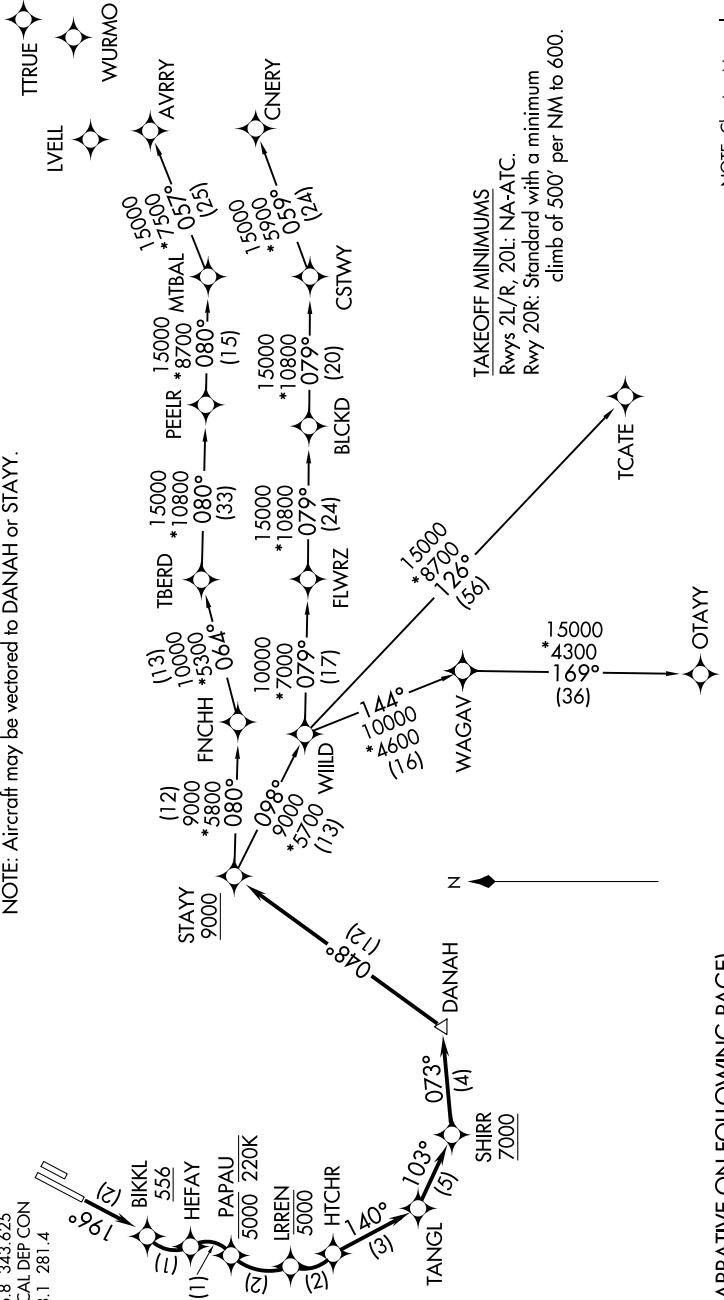


SW-3, 20 JUN 2019 to 18 JUL 2019

- D-ATIS 126.0
- CLNC DEL 118.0
- GPBC 126.8
- GND CON 120.8 (EAST)
- 132.25 (WEST)
- JOHN WAYNE TOWER* 126.8, 343.625
- SOCAL DEP CON 128.1, 281.4

- NOTE: RNP 1.
- NOTE: RF required.
- NOTE: GPS required.
- NOTE: RADAR required.
- NOTE: Turbojet only.
- NOTE: Parachute jumping all hours, 14000 and below, north of route between STAYY and FNCHH.
- NOTE: Aircraft may be vectored to DANAH or STAYY.



TAKEOFF MINIMUMS
 Rwy 2L/R, 20L: NA-ATC.
 Rwy 20R: Standard with a minimum climb of 500' per NM to 600.

(NARRATIVE ON FOLLOWING PAGE)

NOTE: Chart not to scale.

SW-3, 20 JUN 2019 to 18 JUL 2019