

# MIKAA ONE DEPARTURE (RNAV)

**TOP ALTITUDE:**  
14000

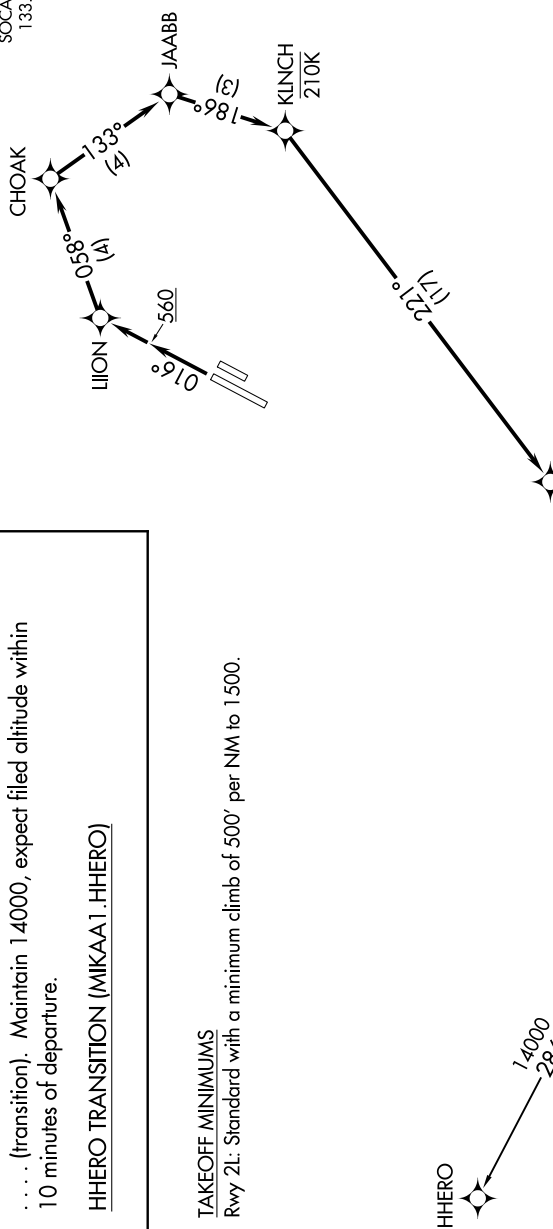
### DEPARTURE ROUTE DESCRIPTION

**TAKEOFF RUNWAY 2L:** Climb heading 016°, then direct LIJON, then on track 058° to CHOAK, then on depicted route to MIKAA thence. . . .  
. . . . (transition). Maintain 14000, expect filed altitude within 10 minutes of departure.

HHERO TRANSITION (MIKAA1.HHERO)

**TAKEOFF MINIMUMS**  
Rwy 2L: Standard with a minimum climb of 500' per NM to 1500.

D-ATIS 126.0  
CLNC DEL 118.0  
CPDLC 118.0  
GND CON 120.8 (EAST)  
132.25 (WEST)  
SOCAL DEP CON 133.85 346.35



- NOTE: RNAV 1.
- NOTE: RADAR required for non-GPS equipped aircraft.
- NOTE: DME/DME/IRU or GPS required.
- NOTE: Turbojets and turboprops only.

NOTE: Chart not to scale.

# MIKAA ONE DEPARTURE (RNAV)