

LOC/DME I-SNA 111.75 Chan 54(Y)	APP CRS 016°	Rwy Idg 5701 TDZE 56 Apt Elev 56
--	------------------------	---

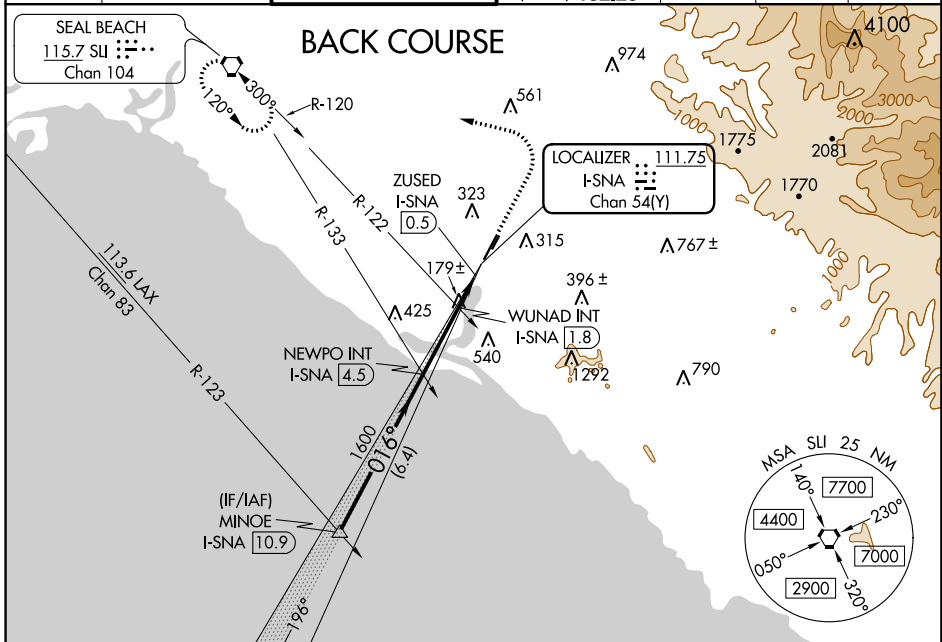
LOC BC RWY 2L

JOHN WAYNE AIRPORT-ORANGE COUNTY (SNA)

⚠ When local altimeter setting not received, use Fullerton altimeter setting and increase all MDA 40 feet, increase S-2L Cats C and D and Circling Cat C visibility ¼ SM, and increase WUNAD fix S-2L Cats C and D visibility ½ SM; Circling Cat C visibility ¼ SM.

MISSED APPROACH: Climb to 800 then climbing left turn to 2600 direct SLI VORTAC and hold.

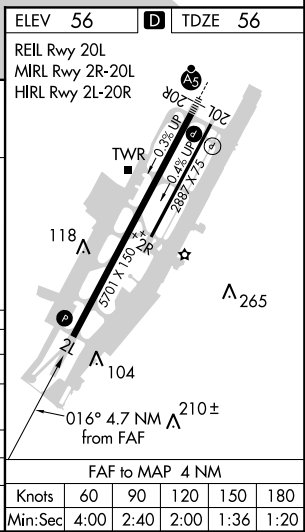
D-ATIS 126.0	SOCAL APP CON 121.3 263.1	JOHN WAYNE TOWER * 126.8 (CTAF) 343.625	GND CON (EAST) 120.8 (WEST) 132.25	CLNC DEL 118.0	CPDLC	UNICOM 122.95
------------------------	-------------------------------------	--	--	--------------------------	-------	-------------------------



VGSI and descent angles not coincident (VGSI Angle 3.00/TCH 72).
*600 when using Fullerton altimeter setting.

MINOE I-SNA 10.9	NEWPO INT I-SNA 4.5	WUNAD INT I-SNA 1.8	I-SNA DME ANTENNA
3000	1600	560	ZUSED I-SNA 0.5
Disregard GS indications.			
6.4 NM		2.7 NM	1.3 NM
800	2600	SLI	

CATEGORY	A	B	C	D
S-2L	560-1	504 (600-1)	560-1 3/8	504 (600-1 3/8)
C CIRCLING	640-1	584 (600-1)	840-2 1/4 784 (800-2 1/4)	1160-3 1104 (1200-3)
WUNAD FIX MINIMUMS (DUAL VOR RECEIVERS OR DME REQUIRED)				
S-2L	480-1	424 (500-1)	480-1 1/4	424 (500-1 1/4)
C CIRCLING	640-1	584 (600-1)	840-2 1/4 784 (800-2 1/4)	1160-3 1104 (1200-3)



SW-3, 20 JUN 2019 to 18 JUL 2019

SW-3, 20 JUN 2019 to 18 JUL 2019